

# SEL News

## Lepidoptera

The Newsletter of the Societas Europaea Lepidopterologica

Volume 61 – October 2018



A kind reminder: please pay your membership fee – Rappel pour les paiements – Zur Erinnerung: bitte zahlen Sie Ihren Mitgliedsbeitrag .....2

Changes to the list of members – Changements à la liste des membres – Änderungen zur Mitgliederliste .....3

2018 SEL Council Meeting Report .....4–5

Nota Lepidopterologica to be indexed .....6

Support for development of SEL website .....6

The new EU data protection – Der neue EU-Datenschutz .....7–8

XXI<sup>th</sup> SEL Congress at the University of Molise (Italy) 2019 .....9–10

Report on the 2018 LepSoc+SEL Congress in Ottawa, Canada .....11–12

Future SEL congresses .....13–15

The 10<sup>th</sup> International Congress of Forum Herbulot .....16–17

The release of the database Geometridae mundi – Zum Erscheinen der Datenbank Geometridae mundi .....18–22

August Kuwert and his Lepidoptera works .....23–24

The European Peacock, *Aglais io* (Linnaeus, 1758), in North America (Lepidoptera: Nymphalidae) .....25

New Books .....26–30

Membership 2018 – Cotisation 2018 – Mitgliedschaft 2018 .....31

Application for membership – Bulletin de souscription – Aufnahmeantrag .....32





**SELepidoptera News** (ISSN 0721-8117) is published by the Societas Europaea Lepidopterologica  
 Editor:  
**Franziska Bauer**  
 fbauer.soceurlep@gmail.com

President:  
**Erik van Nieukerken**  
 nieukerken@naturalis.nl

Vice President:  
**Thomas Simonsen**  
 t.simonsen@nathist.dk

General Secretary:  
**Carlos Lopez Vaamonde**  
 carlos.lopezvaamonde@inra.fr

Treasurer:  
**Wolfgang Eckweiler**  
 SEL-members@eckweiler.com

Membership Secretary:  
**Hossein Rajaei**  
 hossein.rajaei@smns-bw.de

Ordinary council members:  
**Joaquín Baixeras Almela**  
 joaquin.baixeras@uv.es  
**Franziska Bauer**  
 fbauer.soceurlep@gmail.com  
**David Lees**  
 david@nhm.ac.uk  
**Iva Mihoci**  
 ivamihoci@gmail.com  
**Pasquale Trematerra**  
 trema@unimol.it

Web Committee:  
**Richard Mally**  
 richardmally@web.de  
**Franziska Bauer**  
 fbauer.soceurlep@gmail.com

Webmaster for SEL website:  
**Richard Mally**  
 richardmally@web.de  
**Gregor Kunert**  
 info@kbs-leipzig.de

Publication:  
**Nota Lepidopterologica**  
 Editors:  
**Maria Heikkilä**  
 a.a.maria.heikkila@gmail.com  
**David Lees**  
 david.lees@nhm.ac.uk

<http://www.soceurlep.org>



## A kind reminder: please pay your membership fee

Dear SEL members,  
 Please check whether you have transferred your membership fee for 2018 and previous years:

Ordinary member: 50€  
 Corporate member: 65€

The membership fee is due on January 1 of every year. Please transfer your (yet missing) membership fee to the account below. Alternatively you may also pay the amount to your local treasurer (see page 26). Thank you! If your address has changed, please inform the Membership Secretary Hossein Rajaei (hossein.rajaei@smns-bw.de).



## Rappel pour les paiements

Chers membres de la SEL,  
 Merci de vérifier que vous avez bien payé votre cotisation pour 2018 et les années précédentes.

Membres ordinaires: 50€  
 Institutions et entreprises: 65€

La cotisation annuelle est due à compter du 1er janvier. Merci d'opérer le transfert bancaire de votre cotisation 2018 (et éventuellement celles des années précédentes) au compte bancaire ci-dessous. Vous pouvez aussi payer à votre trésorier national, dont la liste est à la page 26 de SELepidoptera News. Merci d'informer Hossein Rajaei, le secrétaire aux membres, de votre nouvelle adresse, si elle a changée (hossein.rajaei@smns-bw.de).



## Zur Erinnerung: Bitte zahlen Sie Ihren Mitgliedsbeitrag

Liebes SEL-Mitglied,  
 bitte prüfen Sie, ob Sie Ihren Mitgliedsbeitrag für 2018 und die vorangegangenen Jahre bezahlt haben.

Einfache Mitglieder: 50€  
 Institutionelle Mitglieder: 65€

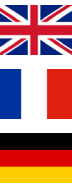
Ihr SEL-Mitgliedsbeitrag wird immer zum 1. Januar eines jeden Jahres fällig. Bitte überweisen Sie Ihren (ggf. noch ausstehenden) Betrag auf das unten stehende Bankkonto. Alternativ können Sie den Betrag auch an Ihren SEL-Schatzmeister vor Ort (siehe Seite 26) bezahlen. Vielen Dank im Voraus! Falls sich Ihre Adresse geändert haben sollte, wenden Sie sich bitte an den SEL-Mitgliedersekretär Hossein Rajaei (hossein.rajaei@smns-bw.de).

**Bank: Postbank Köln**

**IBAN: DE63 3701 0050 0195 6505 07**

**BIC: PBNKDEFF**

# Changes to the list of members – Changements à la liste des membres – Änderungen zur Mitgliederliste



Hossein Rajaei, SEL membership secretary; hossein.rajaei@smns-bw.de

## Abbreviations – abréviations – Abkürzungen

SI: special interests – intérêts – Interessen

## New members – Nouveaux membres – Neue Mitglieder

Wanke, Dominic

Germany

SI: Geometridae

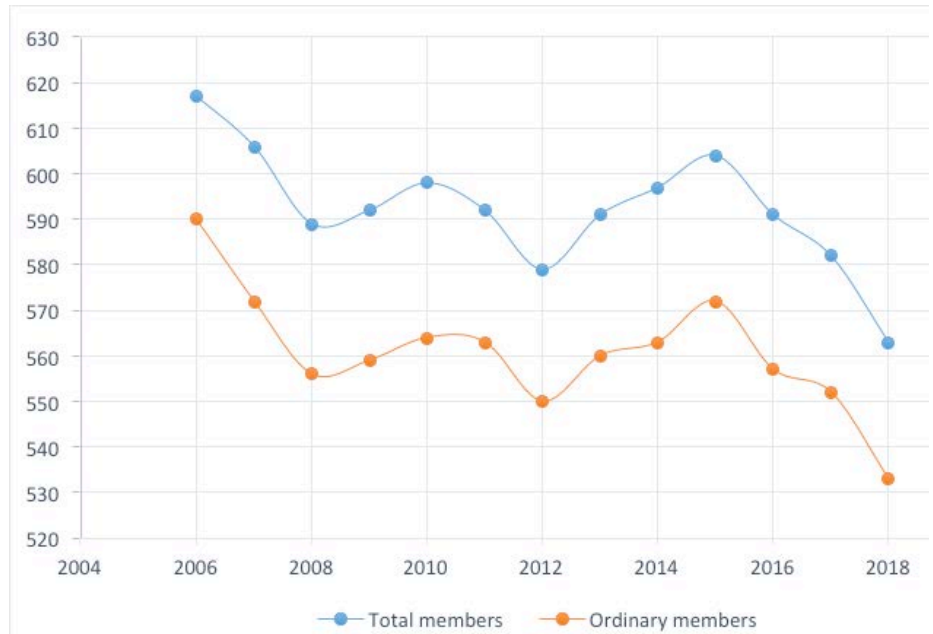
## Deceased – Décédé – Verstorben

Stübner, Andreas "Karl" (Nov 26, 1961 – March 3, 2018)

## Resignations – Démission – Austritte

Fischer, Karl-Heinz (Germany)

Tyni, Marko (Finland)



**Figure 1.** Graph summarizing the total numbers and number of ordinary members during last 12 years.

**Statistics.** Now (30 June 2018), the SEL membership is composed as follows: loss of members continued (even accelerated) during past 12 months. The main reason for this strong decrease is not the few resigned members, but deletion of those members who did not pay their membership fee for several years. The total number of members is now at its lowest com-

pared to the previous 12 years (in year 2012, SEL experienced another minimum with 550 ordinary and 579 total members). In total, from March 2017 to March 2018 five new members joined the SEL (Fig. 1).

**Membership database.** With the great work of Wolfgang Eckweiler, all member data have been

transferred into new database which runs in FileMaker. Wolfgang modified the many different possibilities in the new screen of this database. Now, we are able to generate different (email) address lists etc. with only one click.

(Last update: June 30, 2018)



# 2018 SEL Council Meeting Report

*Carlos Lopez Vaamonde, SEL General Secretary; carlos.lopezvaamonde@inra.fr*

David Lees kindly hosted the last council meeting at the Natural History Museum in London, UK, on Monday 26th and Tuesday 27th March 2018 (Figs 1, 2).

The meeting was attended by Erik van Nieuwerkerken, president; Wolfgang Eckweiler, treasurer; Thomas Simonsen, vice-president; Carlos Lopez Vaamonde, general secretary; Hossein Rajaei, membership secretary; Maria Heikkilä, editor Nota; ordinary council members: David Lees (also editor Nota); Joaquin Baixeras and Pasquale Trematerra (Figs 1, 2).

We discussed about the evaluation report of the last SEL conference received from both organisers Iva Mihoci and Martina Šašić.

A financial report was presented by Wolfgang Eckweiler. We receive 16 K euros of membership fees per year. 2/3 of our annual costs are for Pensoft and VAT (12K euros). Wolfgang hopes that this balance will allow to invite people to the forthcoming SEL conference in Italy. We discussed about the possibility of opening a Paypal account for SEL to allow members to pay online, this is highly depended on improving or renewing the website.

SEL has currently 563 members out of which 555 are paying members (historical minimum of members). This steep decrease of number of members is simply due to removing members that did not pay for a long time.

Council has appointed a committee to discuss about the future of SEL. For more flexibility, council wants to modernize the statutes, but the German law restricts the possibilities. Members may expect proposals during the next General Meeting. Very important for the future is the communication between members and between members and council. The website ought to play a central role, but this is hampered due to the impossibility for council or webmaster Richard Mally to make all the required changes directly. We are looking for renewal of the website, and are looking for members with web programming skills who can help us.

Due to increasing professional commitments, Carlos Lopez Vaamonde no longer wishes to act as general secretary from 2019. Council is therefore looking for a candidate to succeed Carlos who has held the position of general

secretary since September 2015.

The news of Nota being listed by Clarivate Analytics was very much welcomed by council.

We discussed about the Joint SEL and Lep Soc conference in Ottawa July 2018 and ways of promoting SEL and getting new members from the American community. More than ten SEL members had already been registered for the conference.

Pasquale Trematerra presented the draft of the conference web site: Sel2019conference.com.

The council has received two proposals to organise the SEL conference in 2021: one from Toomas Tammaru for a congress in Estonia, and another from Vladimir Krpach for a congress in Macedonia. More on this elsewhere in this issue.

The next council meeting will be held on Sunday the 2<sup>nd</sup> June before the start of the next SEL conference in Italy (3–7 June 2019). Members with ideas/comments should contact the council, preferably through the general secretary.



**Figure 1.** Thomas Simonsen, Hossein Rajaei, Joaquin Baixeras, Carlos Lopez Vaamonde, Pasquale Trematerra, Wolfgang Eckweiler, David Lees, Erik van Nieuwerkerken and Maria Heikkilä (f.l.t.r)



**Figure 2.** Natural History Museum London.



**Figure 3.** Hossein Rajaei, Carlos Lopez Vaamonde, Maria Heikkilä, Wolfgang Eckweiler, Erik van Nieuwerkerken, Joaquin Baixeras, Charles Darwin, Thomas Simonsen, David Lees and Pasquale Trematerra (f.l.t.r)



# Nota Lepidopterologica to be indexed

Maria Heikkilä & David Lees, *Nota* editorial team; [a.a.maria.heikkila@gmail.com](mailto:a.a.maria.heikkila@gmail.com) & [david.lees@nhm.ac.uk](mailto:david.lees@nhm.ac.uk)

We are very pleased to inform that the journal of the SEL, *Nota Lepidopterologica*, has passed a rigorous selection process and will be covered in Clarivate Analytics products and services that measure research influence and impact at the journal and category levels, and show the relationship between citing and cited journals. The publication will be indexed and abstracted in Science Citation Index Expanded (SCIE). This means that

our journal has met certain standards and quality criteria required from journals included in this index and will eventually receive an impact factor.

### Changes in the editorial board

After being a subject editor of *Nota* for over ten years, Thomas Fartmann (Universität Osnabrück), has decided to step down. We are very sorry to see him go and wish to express our gratitude for

his work, and the time and effort he has put into editing the journal. The good news is that Martin Wiemers has accepted to join the editorial board. Martin works as a Research Scientist at the Helmholtz Centre for Environmental Research – UFZ, and will be evaluating submissions dealing with butterfly conservation. Keep the good submissions coming!

ISSN 2367-5365 (online) ISSN 0342-7536 (print)



## **NOTA LEPIDOPTEROLOGICA**

 <http://nl.pensoft.net>



Volume 40 • Numbers 1 and 2 • 2017 <http://nl.pensoft.net>



## Support for development of SEL website

Richard Mally, *SEL* Web Committee; [richardmally@web.de](mailto:richardmally@web.de)



We are looking for support for the further development of our SEL website. If you have knowledge in web design and would like to contribute your abilities and experiences to SEL, then please contact Richard Mally ([richardmally@web.de](mailto:richardmally@web.de)) in English or German, the person responsible for the SEL website.



Wir suchen nach Unterstützung für die Weiterentwicklung unserer SEL-Website. Falls Sie Kenntnisse im Web-Design haben und Ihre Fähigkeiten und Erfahrungen bei SEL einbringen möchten, dann melden Sie sich bitte in Deutsch oder Englisch bei Richard Mally ([richardmally@web.de](mailto:richardmally@web.de)), dem Verantwortlichen der SEL-Website.



# The new EU data protection

*Erik van Nieukerken, Hossein Rajaei & Wolfgang Eckweiler*

Since 25 May 2018 the European Union's new General Data Protection Regulation (GDPR) is in effect. This is primarily to keep big companies like Facebook, Google etc. in their place, which subsist on trade in data and advertisement, but it also affects small societies like SEL.

National data protection laws did exist earlier, and we abode by them, but the new GDPR reaches further in many issues and accounts for the modern digital world. The range of sentences has been considerably tightened, so that even small infringements can be very expensive.

Data processing is to be restricted to the absolute necessary, and only few people (council) have access to the members' personal information. With your signature on the declaration of membership and the data provided therein, we can assume the agreement for their specific appropriated use within the society. For this we have formulated some principles (see "synopsis of the data protection directive of SEL Societas Europaea Lepidopterologica e. V." as appendix to this text).

The use of your personal data beyond this or even the proliferation to third parties requires your explicit agreement. Unfortunately, this has some consequences: for example, we cannot any longer send out a list of members to everybody without obtaining the agreement to this from every individual member. This means a lot of effort, and therefore, for the time being, there won't be an up-to-date index of members. The reason for this is that nowadays such an index can be easily digitized and misused for advertisement purposes. Likewise, the posting of photos on a website is a legal risk without the consent of all people depicted on the photos. Therefore, we currently don't have a picture gallery on our website.

On its website, SEL has to ensure that "phishing" of members' personal data cannot happen. So far, we have not incorporated a "contact form", which would simplify the possibility of getting in contact with each other through the internet. Since this includes the collection and digital transfer of personal data, our data protection declaration would accordingly have to be significantly extended.

On many websites, the data protection declaration page is now the most text extensive! Consequently, our website remains passive and only informative for the user. Unfortunately, the GDPR leads to a substantial extra effort for the volunteers in our society. We hope for your sympathy if issues may fall by the wayside now and then.

Appendix: Synopsis of the data protection directive of SEL Societas Europaea Lepidopterologica e. V.

The protection of your data is very important to SEL Societas Europaea Lepidopterologica e. V. ("SEL" in short). Therefore, no personal information of our members – except for the council and the society's office-holders – will be published on our website.

With your application for membership, you have forwarded the following data to SEL: Your name or the name of your organization, your title if applicable, your address, your date of birth, your phone number(s), your topic of interest, your email address and possibly your bank details.

This information will be used by us for the following membership-relevant matters:

- Mailing of our journal *Nota Lepidopterologica* to the members
- Mailing of our newsletter *SELepidoptera News* to the members
- Mailing of invitations to the general meeting
- Mailing of honourings/birthday wishes
- Suggestion of congresses/meetings/events which could be of interest to you
- Booking of payment transactions
- Mailing of membership cards, confirmation of payment and donation receipts

We treat your personalized data with confidentiality and according to data protection legislation as well as to this data protection declaration. Your data will not be passed on to third parties without your explicit agreement.

You can always exercise your right of objection and withdrawal regarding the data submitted to us. Furthermore, you can obtain information of the use of your data.

*(Translated by Richard Mally)*



# Der neue EU-Datenschutz

*Erik van Nieukerken, Hossein Rajaei & Wolfgang Eckweiler*

Seit dem 25. Mai 2018 gilt die neue Datenschutzgrundverordnung (DSGVO) in der Europäischen Union. Das soll vor allem große Konzerne, die vom Datenhandel und Werbung leben wie Facebook, Google etc., in ihre Schranken weisen, trifft jedoch auch kleine Vereine wie die SEL.

Nationale Datenschutzgesetze gab es zwar auch schon vorher und wurden von uns eingehalten, aber die neue DSGVO geht in vielen Punkten weiter und trägt der modernen digitalen Welt Rechnung. Deutlich verschärft wurde der Strafraum, so dass auch kleine Verstöße sehr teuer werden können.

Die Datenverarbeitung ist auf das absolut Notwendigste zu beschränken, und nur wenige Personen (Vorstand) haben Zugriff auf die persönlichen Daten der Mitglieder. Mit Ihrer Unterschrift auf der Beitrittserklärung und den darin bereitgestellten Daten können wir eine zweckgebundene Zustimmung zu der notwendigen, vereinsinternen Nutzung unterstellen. Hierzu haben wir einige Grundsätze formuliert (siehe „Kurzfassung der Datenschutzrichtlinien der SEL Societas Europaea Lepidopterologica e. V.“ als Anhang am Ende dieses Textes). Einer Nutzung Ihrer persönlichen Daten darüber hinaus oder gar eine Weitergabe an Dritte bedarf aber Ihrer ausdrücklichen Zustimmung. Das hat leider einige Konsequenzen: So können wir zum Beispiel nicht mehr ein Mitgliederverzeichnis an alle verschicken, ohne vorher von jedem einzelnen Mitglied eine Zustimmung hierzu einzuholen. Das ist sehr aufwendig, daher wird es vorerst kein aktuelles Mitgliederverzeichnis mehr geben. Grund: ein derartiges Verzeichnis kann heute bequem digitalisiert und für Werbezwecke missbraucht werden. Auch das Platzieren von Fotos auf einer Website ist jetzt ohne Zustimmung aller abgelichteten Personen ein Risiko. Daher haben wir zurzeit keine Bildergalerie auf unserer Website.

Auf Ihrer Website hat die SEL zu garantieren, dass niemand Fremdes die Mitgliederdaten „abfischen“ kann. Bisher haben wir noch kein „Kontaktformular“ integriert, um Interessenten die Möglichkeit der Kontaktaufnahme über das Internet zu erleichtern. Da hier persönliche Daten erhoben und digital übertragen werden, müsste dementsprechend unsere Datenschutzerklärung deutlich erweitert werden.

In vielen Websites ist jetzt die „Datenschutzerklärung“ die textreichste Seite! Daher bleibt unsere Website absolut passiv und nur informativ für den Nutzer. Die DSGVO führt leider zu einem deutlichen Mehraufwand für die ehrenamtlich Tätigen im Verein. Bitte haben Sie Verständnis, wenn das Eine oder Andere mal liegenbleibt.

Anhang: Kurzfassung der Datenschutzrichtlinien der SEL Societas Europaea Lepidopterologica e. V.

Der SEL Societas Europaea Lepidopterologica e. V. (kurz „SEL“) ist der Schutz Ihrer Daten sehr wichtig. Daher werden auf unserer Website keine persönlichen Daten unserer Mitglieder — mit Ausnahme die des Vorstands und der Funktionsträger des Vereins — veröffentlicht.

Mit Ihrem Mitgliedsantrag haben Sie folgende Daten an die SEL weitergeleitet: Ihren Namen bzw. den Namen Ihrer Organisation, ggf. Ihren Titel, Ihre Anschrift, Ihr Geburtsdatum, Ihre Telefonnummer(n), Ihr Interessengebiet, Ihre E-Mail-Adresse sowie ggf. Ihre Bankverbindung.

Diese Angaben werden von uns unter anderem für folgende Angelegenheiten, die im Rahmen Ihrer Mitgliedschaft notwendig sind, verwendet:

- Versenden unserer Zeitschrift *Nota Lepidopterologica* an die Mitglieder
- Versenden unserer *SELepidoptera News* an die Mitglieder
- Versenden von Einladungen zur Mitgliederversammlung
- Versenden von Ehrungen/Geburtstagsgrüßen
- Hinweis auf Kongresse/Tagungen/Veranstaltungen, die Sie interessieren könnten
- Buchung von Zahlungsvorgängen
- Versendung von Mitgliedsausweisen, Beitragsbestätigungen und Spendenbescheinigungen

Wir behandeln Ihre personenbezogenen Daten vertraulich und entsprechend der gesetzlichen Datenschutzvorschriften sowie dieser Datenschutzerklärung. Ihre Daten werden nicht ohne Ihr ausdrückliches Einverständnis an Dritte weitergegeben.

Bezüglich Ihrer uns übermittelten Daten können Sie jederzeit das Recht auf Einspruch und Widerruf wahrnehmen. Sie können ebenfalls jederzeit Auskunft über die Verwendung Ihrer Daten erhalten.





# XXI<sup>th</sup> SEL Congress at the University of Molise, Campobasso (Italy), June 3–7, 2019

*Pasquale Trematerra; trema@unimol.it*

Molise is a small Region located in central Italy, between the Apennine Mountains and the Mediterranean sea, where forests give space to valleys and high plateaus and where you can visit cities and small villages with their castles (Figs 1–13). Although Molise is a small Region, there are many interesting

natural sites. There are two UNESCO “Man And Biosphere” reserves in Montedimezzo and Collemeluccio that allow for sustainable growth and protection of biodiversity. Furthermore, in Capracotta there is a botanical garden, where the nature of the Apennines has been re-created.

Entomologists can also go trekking in the National Park of Abruzzo, Lazio and Molise covering a part of the region at the border with Abruzzo. In these mountains the Volturno river has its springs. It runs across the WWF oasis “Le Mortine” and then drops into the Tyrrhenian Sea in the Campania



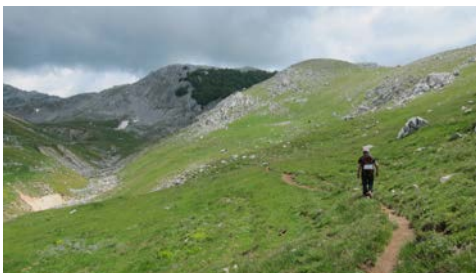
**Figure 1.** University of Molise, Campobasso



**Figure 2.** Campobasso: typical architectural structure of central Italy



**Figure 3.** Protected area of Guardiaregia-Campochiaro



**Figure 4.** Natural area of Mainerde



**Figure 5.** Protected natural area of Le Mortine



**Figure 6.** Karst cave Pozzo della neve



**Figure 7.** Dune vegetation of Campomarino



**Figure 8.** Torbiera of Pantano della Zittola



**Figure 9.** Termoli



**Figure 10.** Abbey of Castel Sain Vincenzo



**Figure 11.** Amphitheater of Pietrabbondante



**Figure 12.** Traditional cuisine



Region. There is also another WWF oasis in the area of Guardiaregia-Campochiaro covering the Matese Mountains, with the elegant 2045 m high summit of Mount Miletto. This natural park is known especially for its caves and karst formations and the characteristic canyon made by the Torrente Quirino,

with the spectacular 100 m high waterfall of San Nicola.

In this area Biferno River originates which drops into the Adriatic Sea. Following its course, you can discover how the territory of Molise changes.

The Adriatic coast of Molise is generally soft and sandy but there

are also rocky headlands. In Petacciato you will enjoy the shade of pine forests, dozing lulled by the rhythmic sound of the waves and cicadas.

For more information please visit <http://www.sel2019conference.com/>



Figure 13. UNESCO “Man And Biosphere” reserve of Montedimezzo and Collemeluccio


 Università degli Studi del Molise

Societas Europaea Lepidopterologica
 




  
 EUROPEAN CONGRESS OF LEPIDOPTEROLOGY

The European Congresses of Lepidopterology are dedicated to research on butterflies and moths in general, particularly in Europe

**3-7 JUNE 2019**  
**UNIVERSITY OF MOLISE**  
**CAMPOBASSO, ITALY**

[sel2019conference.com](http://sel2019conference.com)

  
 Molise

Figure 14. Congress poster

# Report on the 2018 LepSoc+SEL Congress in Ottawa, Canada

Vazrick Nazari, [vazrick.nazari@agr.gc.ca](mailto:vazrick.nazari@agr.gc.ca)

The 67<sup>th</sup> annual meeting of The Lepidopterists' Society was held this year as a joint conference with SEL on July 12–14 at Carleton University, Ottawa, Ontario, Canada. The three-day congress was attended by 120 participants (Figs 1, 2), representing 15 countries (Austria, Brazil, Canada, China, Czech Republic, Denmark, Estonia, Germany, Korea, Norway, Switzerland, The Netherlands, Thailand, United Kingdom, and United States). Most notably, the student attendance this year was phenomenal with 20 oral presentations and nine posters.

Two days prior, a smaller gathering of Microlepidopterists (Fig. 3) took place on July 10<sup>th</sup> at the Canadian National Collection (K.W. Neatby building). Although this was the 3rd North American Microlepidopterists' meeting, the 39 participants were from many different countries. Past meetings of

the North American Microlepidopterists were held in Denver, Colorado (2016) and Tucson, Arizona (2017). This year, eleven talks and four workshops on various topics relating to microlepidoptera were presented, followed by a group dinner at a nearby restaurant.

The joint meeting of LepSoc and SEL was kicked off with a welcome reception on the evening of July 11<sup>th</sup> at Richcraft Hall, a modern building on the Carleton campus with a scenic view overlooking the Rideau River. The meeting officially opened on the morning of July 12<sup>th</sup> with remarks from LepSoc president Brian Scholtens, local Lepidopterist and past host of the LepSoc meeting in Ottawa, Don Lafontaine, and myself on behalf of the meeting organizers. The keynote speaker was Carleton biologist Jayne Yack who presented

a captivating talk about the ongoing research in her lab on acoustic strategies used by Lepidoptera caterpillars for survival.

Over the next two days, the meeting continued with 57 talks covering many different topics, including behaviour and ecology, acoustics, genetics and phylogenetics, taxonomy and systematics, faunistics and conservation, imaging and curation etc. Seventeen posters remained on display throughout the conference.

This year's meeting was a special event also for a different reason: The awe-inspiring large-scale prints of local moths by Ottawa photographer Jim des Rivieres displayed at the conference venue provided a unique ambience and started many conversations. Moth collecting events took place throughout the meeting in various locations around Ottawa. Organ-



Figure 1. Participants of the shared meeting of LepSoc and SEL in Ottawa (photo: Carleton)



ized tours of the Canadian National Collection took place on July 10 and July 12<sup>th</sup> and nearly everyone in attendance got a chance to see the CNC and examine, however briefly, parts of the collection that were of interest to them.

On July 13<sup>th</sup>, buses took the participants to the Lone Star Ranch, a Texas-style open-air restaurant and ranch, where everyone enjoyed an evening of good food and beer, music and mothing. At the banquet on July 14<sup>th</sup>, SEL president Erik van Nieukerken gave a presentation about the SEL organization, its mission and history, and

the upcoming congresses in Italy (2019) and Macedonia (2020). After a buffet dinner and In Memoriam talks about two recently deceased American lepidopterists (Thomas Emmel and Ron Wielgus), awards were presented by the LepSoc president to winners of the Harry K. Clench (best oral presentation) and Alexander B. Klots (best poster presentation) awards. The last event of the evening was the raffle, and many participants enjoyed winning unexpected Lepidoptera-related door prizes. The LepSoc tradition of group photos (of ladies with butterfly dresses and gentlemen with Lepidop-

tera-themed ties) was yet-again observed this year. As a final touch to this successful congress, on July 15 some of the participants joined organized daytime tours to Gatineau Park and other sites around Ottawa to photograph or collect butterflies.

Next year's Lepidopterists' Society meeting will be held at University of Davis, California (dates to be determined). It will be hosted by Lynn Kimsey, director of the Bohart Museum of Entomology, University of California in Davis. ■



Figure 2. Audience in the shared meeting of LepSoc and SEL

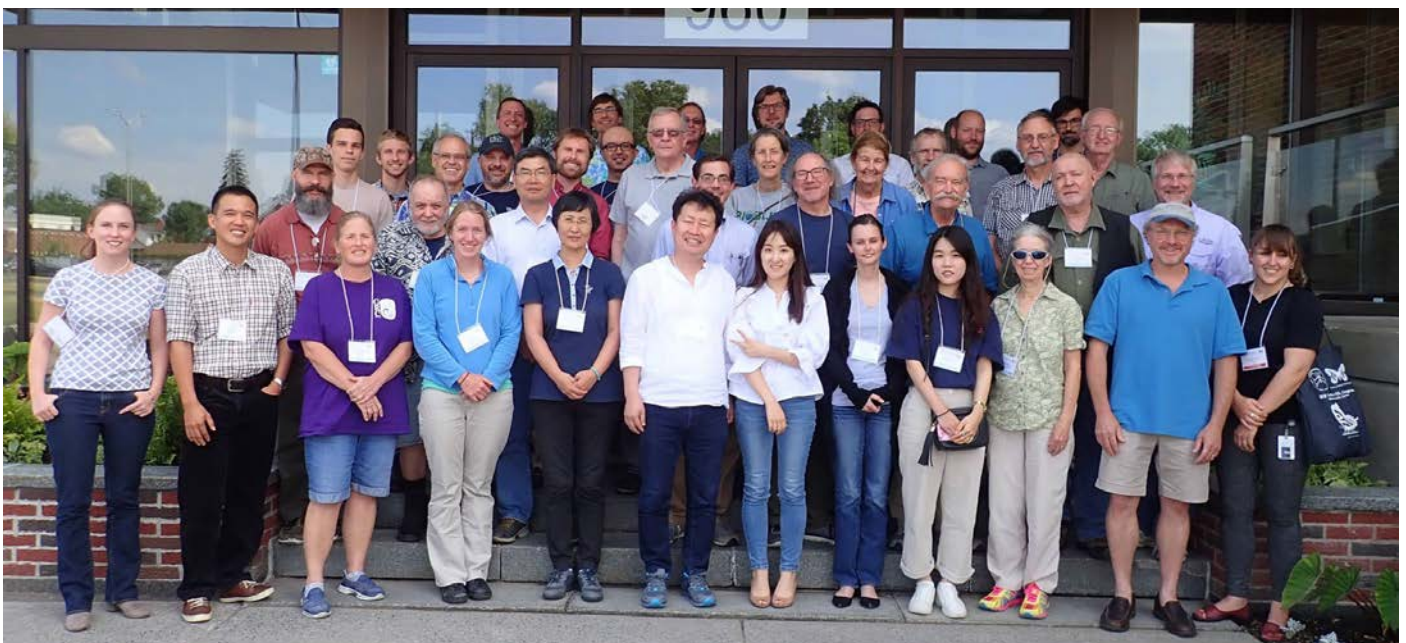


Figure 3. Participants of the meeting of the North American microlepidopterists (photo: Jocelyn Gill)

# Future SEL congresses

SEL council

## Field Congress in Macedonia in 2020

Vladimir Krpach would like to invite SEL members to the Shara Planina, Popova Shapka, Institute of Ecology and Technology, especially for field work in the extensive mountain area. We hope that participants together can contribute to enlarge the knowledge of the Lepidoptera in the Shara Planina, and members can also visit the SEL study area Galičica Planina to increase the general knowledge of Macedonian Lepidoptera. The dates have not yet been set, they are probably in summer, but should avoid the period around the International Congress of Entomology in Helsinki (19–24 July 2020).

We realise that an extra congress is new for SEL, although we did have a field congress once in South Tyrol in 2004. We look forward to hear comments and ideas from members. This will be an ideal opportunity to do joint fieldwork, and learn from each other. A joint publication about results is one of the expected outcomes.

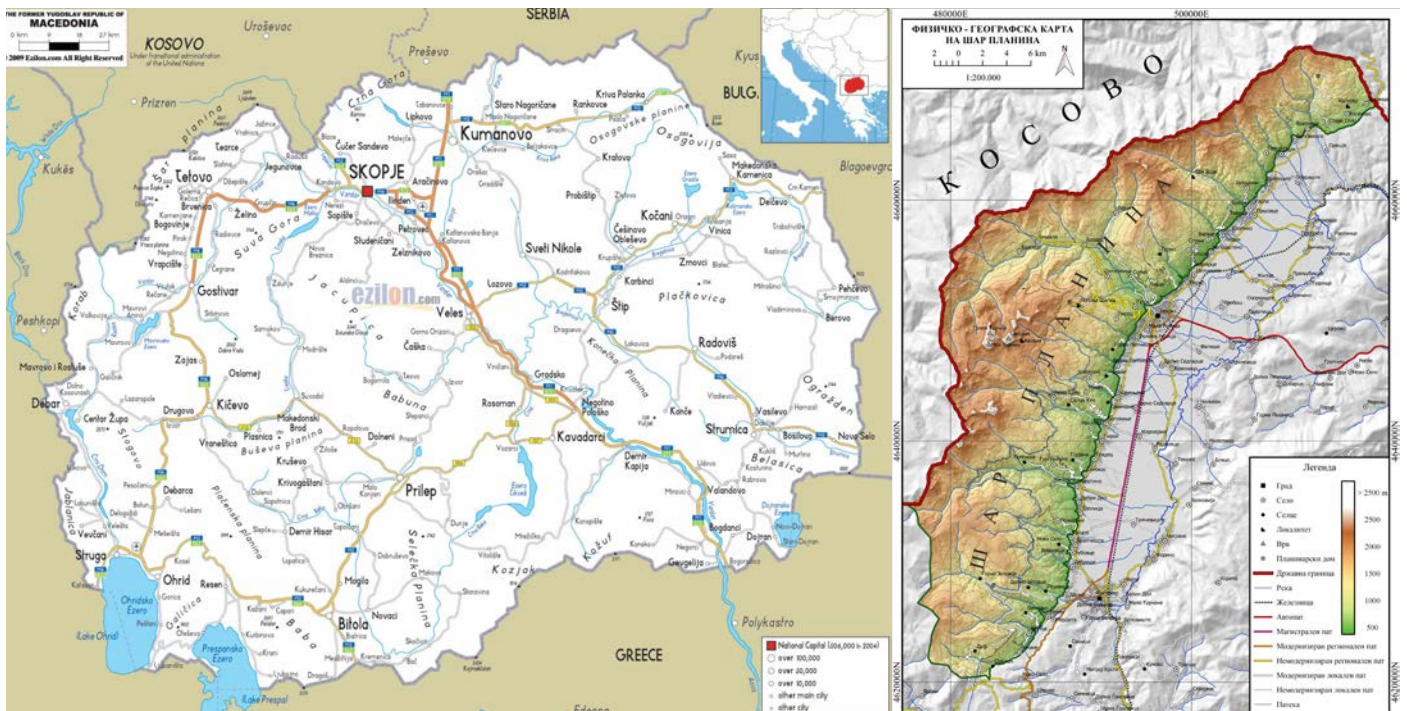


Figure 1. Macedonia (left) with Shar Mountain Region (right)



Figure 2. Impressions from the study area



Figure 2. Impressions from the study area and accommodations

## 22<sup>nd</sup> Congress of Lepidopterology in Estonia

SEL council received an offer from Toomas Tammaru (Chair of Entomology, Department of Zoology, University of Tartu) to organise the 22<sup>nd</sup> Congress of Lepidopterology in Estonia.

Time: late May or early June (before the holiday season)

Venue: The Laulasmaa Spa and Conference Hotel, <https://www.laulasmaa.ee/en/>

Laulasmaa (Fig. 1) is a village 32 km W of Tallinn, and is accessible by public transport from the city. It is located on the coast of the Baltic Sea and the surroundings offer a variety of habitats such as coastal sand dunes, different types of forest and calcareous meadows. The organisers suggest to have a low budget accommodation in addition as well.



Figure 1. Laulasmaa in Estonia, the potential site for the 22<sup>nd</sup> SEL congress (photos: Toomas Tammaru & Lauri Laan)



# The 10<sup>th</sup> International Congress of Forum Herbulot

## “Integrative Taxonomy, a multidisciplinary approach to answer complicated taxonomic questions” Stuttgart, June 11–16, 2018

*Hossein Rajaei & Axel Hausmann*

Altogether 77 participants from 21 countries were participating in the 10<sup>th</sup> International congress of Forum Herbulot (Fig. 1) and were welcomed at a “Swabian-Thuringian Barbecue” on Monday (June 11, 2018).

From Tuesday to Thursday (June 12–14, 2018), 52 presentations in nine sessions were chaired by Dr.

Axel Hausmann (Munich, Germany) (Fig. 2), Dr. Robert Trusch (Karlsruhe, Germany), Dr. Pasi Sihvonen (Helsinki, Finland), Dr. Hossein Rajaei (Stuttgart, Germany), Dr. Gunnar Brehm (Jena, Germany), Dr. Sei-Woong Choi (Jeonnam, South Korea), Dr. Feza Can (Hatay, Turkey), and Dr. Nan Jiang (Beijing, China).

In this congress, we were delighted at the unusually strong female participation (31 out of 77), and a relatively large number of young attendees (24 participants being 30 or younger).

As an innovative approach in this congress, a one hour workshop entitled “Large-scale scientific projects: workshop on partner search”



**Figure 1.** Participants of the 10<sup>th</sup> International Congress of Forum Herbulot in Stuttgart in June 2018



**Figure 2.** Dr. Axel Hausmann



**Figure 3.** Malcolm Scoble, plenary lecturer



was organized by Dr. Pasi Sihvon (Helsinki, Finland).

The conference started with a lecture on the ground-breaking effects of “Willi Hennig and the synthesis of phylogenetics and taxonomy”. The seminary sessions of the second, third and fourth day (June 12–14, 2018) covered different research topics of the geometrid moths, from phylogeny and taxonomy (Fig. 3) to zoogeography, faunistics, methodological aspects and other topics.

The participants attended the conference dinner in Palace Rosenstein on Wednesday evening (June 13, 2018) and visited the biological exhibition of State Museum of Natural History, which is in the same building.

The conference was closed on Thursday noon by Dr. Axel Hausmann (head of the scientific board of Forum Herbulot). During the closing ceremony the life achievements of Dr. Jeremy D. Holloway (NHMUK, London, UK) with great impact on geometridology over 50 years were appreciated and Manfred Sommerer (Munich) was made honorary member of Forum

Herbulot (Fig. 4) for his merits in having had the original idea to found this research initiative and in developing its format.

The 10<sup>th</sup> International congress of Forum Herbulot offered pleasant opportunities for visiting the Black Forest National Park on Thursday (June 14, 2018) afternoon. In this visit, Dr. Dr. Jörn Buse (from Ecosystem Monitoring, Research and Wildlife Conservation department of Black Forest National Park), presented a talk on the importance of methods of the protection of Black Forest National Park. After that, all participants took the opportunity to visit the park accompanied by Dr. Jörn Buse and Dr. Marc Förschler (both from National Park).

On Friday (June 15, 2018) participants attended the sightseeing and guided tours through the city of Tübingen and Burg Hohenzollern.

The research initiative FORUM HERBULOT was, once again, generally welcomed, and the need for and the advantages of close scientific cooperation among geometrid experts was stressed.



**Figure 4.** Manfred Sommerer (Munich) was made honorary member of Forum Herbulot.

Several proposals for the venue of the next International Congress of Forum Herbulot in summer 2020, either in England, Turkey, or South Korea, were generally appreciated leaving the decision to the scientific board of Forum Herbulot. ■



**Figure 5.** Participants of the 10<sup>th</sup> International Congress of Forum Herbulot in Stuttgart in June 2018



## Zum Erscheinen der Datenbank *Geometridae mundi* (1. Ausgabe: Juni 2018)

Robert Trusch & Michael Falkenberg, Staatliches Museum für Naturkunde, Karlsruhe, Germany;  
trusch@smnk.de, m.falkenberg@smnk.de

Vom 11. bis 16. Juni 2018 fand das X. FORUM HERBULOT in Stuttgart statt. Die Teilnehmer, 75 auf dem Gebiet der Geometridae forschende Wissenschaftler aus Belgien, Brasilien, Chile, China, Dänemark, Estland, Finnland, Frankreich, Großbritannien, Indien, Italien, Russland, Schweden, Schweiz, Südafrika, Südkorea, Türkei, Ungarn und den USA haben mit den Tagungsunterlagen auch die Datenbank *Geometridae mundi* erhalten. Mit der Übergabe der Daten auf einer Doppel-DVD wurde das Projekt, das unter der Leitung von Axel Hausmann von der Zoologischen Staatssammlung München (ZSM) steht, erstmals veröffentlicht. Hans Löbel und Axel Hausmann präsentieren damit ein Modellvorhaben: den Inhalt eines entomologischen Fachbuchs, nämlich die Illustration des Weltkatalogs der Spanner, mit Hilfe einer digitalen Datenbank (auf der Grundlage einer Html-Programmierung) bekannt zu machen.

In diese Datenbank wurden alle beschriebenen Arten und Unterarten der Familie Geometridae auf der Grundlage des Katalogs von SCOBLE et al. (1999) und in einem Update von SCOBLE & HAUSMANN (Stand 2007, siehe [http://www.lepbarcoding.org/geometridae/species\\_checklists.php](http://www.lepbarcoding.org/geometridae/species_checklists.php)) sowie auch eine größere Zahl unklarer Taxa aufgenommen, insgesamt etwa 29.800. Im Hinblick auf die erhebliche Datenmenge wurde der Stoff in drei Teile aufgeteilt, die im Wesentlichen den großen Unterfamilien Sterrhinae, Larentiinae und Ennominae entsprechen.

Ruft man die Datenbank in einem beliebigen Web-Browser auf, so gelangt man über eine Startseite wahlweise zu einem kurz gehaltenen allgemeinen Textteil oder zu diesen drei speziellen Teilen. In ihnen erfolgt eine zusammenfassende Darstellung aller Arten in der Rubrik „Geometridae worldwide“. Diese wird ergänzt durch sechs weitere Rubriken, welche die Arten den jeweiligen Faunenregionen

zuordnen. Damit kann der Nutzer beispielsweise bei der Determinationsarbeit von Tieren mit bestimmter geografischer Herkunft den Artenbestands dieser Region aufrufen, also zum Beispiel den afrikanischen, australischen oder einer sonstigen Faunenregion.

In der nun vorliegenden Erstveröffentlichung ist es leider noch nicht möglich, alle Arten der Welt abzubilden. Mit Stand Mai 2018 sind aber bereits 12.534 Arten in mehr als 49.200 digitalen Fotos illustriert. Dieses Bildmaterial gründet sich auf die folgenden Sammlungen: coll. HERBULOT (incl. der „HERBULOT-Addenda“) der ZSM (etwa 10.500 Taxa), die Geometriden Sammlung der Australian National Insect Collection, Canberra (ANIC, etwa 1.200 Taxa), die Sammlung LÖBEL (etwa 2.000 Taxa), das umfangreiche Material des Ditsong-Museums Pretoria, die Sammlung STAUDE, Magaliesburg/Südafrika (Datenbank Lepidops) sowie weiterer namhafter Entomologen. Die Berücksichtigung dieser Sammlungen ermöglichte es auch, 1.419 Holo- oder Lectotypusexemplare sowie 774 Paratypen abzubilden.

Zurück zur Datenbank: Die Darstellung des Gesamtartenbestands erfolgt auf mehreren Betrachtungsebenen. Es gibt Übersichtsseiten, Gattungs- und Artseiten. Für jedes Taxon existiert eine eigene Seite, auf der bis zu acht digitale Fotos (inklusive Unterseite und Genitalpräparate) mit einer Bildgröße von 750 Pixel (Bildbreite) angezeigt werden. Alle Gattungs- und Artseiten können darüber hinaus über alphabetische Indices direkt aufgerufen werden. Weiteres hierzu erfährt man im Allgemeinen Teil. Durch eine vielfältige Verlinkung zwischen den Inhaltsverzeichnissen, den Indexdateien sowie den Übersichts- Gattungs- und Artseiten ist die Datenbank sehr anwenderfreundlich.

Ein wesentlicher Vorteil gegenüber einem herkömmlichen Fachbuch besteht darin, dass es keinen

Redaktionsschluss gibt. Bezüglich der Darstellung von Texten können ein Fachbuch und das digitale Medium das gleiche leisten. Hinsichtlich der Bereitstellung von Bildern, von Indexfunktionen, der nachträglichen Einbindung von Literatur, der langfristigen Weiterentwicklung und der Kosten ist die vorliegende digitale Datenbank den Printmedien deutlich überlegen. In Zukunft kann die Datenbank vielleicht sogar online zur Verfügung gestellt werden und damit noch leichter die Zusammenarbeit der Geometridenforscher der Welt ermöglichen.

Zum Grundkonzept des Projektes gehört die Möglichkeit der fortlaufenden Ergänzung und Weiterentwicklung der Datenbank in der Zukunft. Dies betrifft nicht nur die Einbeziehung weiteren Bildmaterials, sondern auch das Einschließen neu beschriebener Arten, die Ergänzung der Artseiten durch Genitalabbildungen, Texteinträge und die Einbindung von Literatur – sowie natürlich Fehlerkorrekturen. Die Autoren wünschen sich, dass sich an dem weiteren Ausbau der Datenbank Entomologen möglichst vieler Länder mit Bild- und Fachbeiträgen beteiligen.

Interessenten können die aktuelle Datenbank *Geometridae mundi* auf Doppel-DVD zum Selbstkostenpreis (ca. EUR 10,-) bei Dr. Axel Hausmann, Zoologische Staatssammlung München, Münchhausenstr. 21, D-81247 München (E-Mail: [axel.hausmann@zsm.mwn.de](mailto:axel.hausmann@zsm.mwn.de)) bestellen. Systemvoraussetzung ist das Vorliegen eines Internetbrowsers, nach eigenen Erfahrungen gewährleistet insbesondere Google Chrom eine optisch schöne Wiedergabe.

### Literatur

Scoble, M. (ed.), M. S. Parsons, M. J. Scoble, M. R. Honey, L. M. Pitkin & B. R. Pitkin 1999. *Geometrid Moths of the World. A Catalogue* (Lepidoptera, Geometridae). Vol. 1 and 2. CSIRO Publishing, Collingwood & Apollo Books, Stenstrup. xxv + 1016 + 129 pp.

## The release of the database *Geometridae mundi* (1<sup>st</sup> edition: June 2018)



From June 11 to 18, 2018 the 10<sup>th</sup> FORUM HERBULOT took place in Stuttgart, Germany. 75 geometrid researchers from Belgium, Brazil, Chile, China, Denmark, Estonia, Finland, France, Great Britain, India, Italy, Russia, Sweden, Switzerland, South Africa, South Korea, Turkey, Hungary and the United States participated.

Besides the conference materials participants also received the database *Geometridae mundi*, that is being directed by Axel Hausmann (ZSM). With the distribution of a double DVD the project has officially been published. Hans Löbel and Axel Hausmann are presenting a new model project: communicating the content of an entomological textbook, i.e. the illustration of the World Catalogue of geometrids, by the help of a digital database (based on HTML programming).

The database lists all described species and subspecies of *Geometridae* on the basis of the catalogue by Scoble et al. (1999) and an update thereof by Scoble & Hausmann (state of 2007, see [http://www.lepbarcoding.org/geometridae/species\\_checklists.php](http://www.lepbarcoding.org/geometridae/species_checklists.php)), and further a number of uncertain taxa, giving a total of 29.800. With regard to the large amount of data the content was split into three parts which largely correspond to the big subfamilies Sterrhinae, Larentiinae and Ennominae.

Opening the database in a random web browser launches the home page that directs you either to a short introductory text or these three particular parts which give a summary of all species under “*Geometridae* worldwide”. This part is complemented by six further categories that assign species to the respective faunal regions. This helps facilitate determination of specimens of certain origin, like for example the African, Australian faunal region.

In this first publication it is unfortunately not possible to picture every single species of the world. However, until May 2018 12,534 species have been illustrated with more than 49,200 digital photos. These photos were taken from the



following collections: coll. HERBULOT (incl. the “HERBULOT-Addenda”) from ZSM (approx. 10,500 Taxa), the geometrid collection of the der Australian National Insect Collection, Canberra (ANIC, approx. 1.200 Taxa), the collection LÖBEL (approx. 2.000 Taxa), the comprehensive material of the Ditsong Museums Pretoria, the collection STAUDE, Magaliesburg/South Africa (database Lepidops), as well as collections of further renowned entomologists. With the help of these collections 1,419 holotype and lectotype specimens and 774 paratype specimens can be displayed.

Back to the database: The presentation of the whole species inventory takes place on several levels. There are overview pages as well as pages for genera and species, respectively. Each taxon has its own page with up to eight digital photos (incl. undersides of wings and genitalia) of 750 pixels in width each. Further, each genus and species page can be accessed through alphabetical indices (more information about this can be found in the general part). Numerous links between index pages as well as overview, genus and species pages make the database very user-friendly.

A considerable advantage over a conventional textbook is the lack of an editorial deadline. Regarding presentation of text both a textbook and a digital platform can carry out about the same. However, the digital database outperforms any printed media with respect to

access to photos, index functions, a later inclusion of literature records, the long-term further development and costs. The database might possibly be accessible online in the future and therefore facilitate collaboration of geometrids experts around the globe.

The general concept of the project offers the opportunity of constant addition and further development of the database in the future. This will not only concern the inclusion of photo material but also of newly described species, the addition of genitalia photos, texts and literature records to species pages. The possibility to eradicate mistakes is a further advantage. The authors of the database hope for many international entomologists to take part in the development of the database by providing photos and text contribution.

Those who are interested in the acquiring the *Geometridae mundi* database may purchase the double DVD at a price of 10EUR from Dr. Axel Hausmann, Zoologische Staatssammlung München, Münchhausenstr. 21, D-81247 München (email: [axel.hausmann@zsm.mwn.de](mailto:axel.hausmann@zsm.mwn.de)). Any web browser is suitable for the database, however, user experience will be best with Google Chrome.

### Reference

Scoble, M. (ed.), M. S. Parsons, M. J. Scoble, M. R. Honey, L. M. Pitkin & B. R. Pitkin 1999. *Geometrid Moths of the World. A Catalogue* (Lepidoptera, Geometridae). Vol. 1 and 2. CSIRO Publishing, Collingwood & Apollo Books, Stenstrup. xxv + 1016 + 129 pp. ■



## Online-Download von Geometridae mundi – Online download of Geometridae mundi

Geometridae mundi steht auch zum Online-Download zur Verfügung. Der benötigte Speicherplatz beträgt 6,1 GB. Leider ist ein direkter Download über Internetexplorer, Google Chrome und Co nicht möglich, diese lassen nur einen Zeit- und Größenbegrenzten Download zu! Daher führen Sie im Idealfall den Download mit einem FTP-Clients wie „FileZilla“ aus. Abgebrochene Downloads werden mit diesem FTP-Client nahtlos wieder aufgenommen: [http://www.chip.de/downloads/FileZilla\\_13011076.html](http://www.chip.de/downloads/FileZilla_13011076.html)

*The Geometridae mundi database can also be downloaded online. The following gives you a short instruction on how to download it. Due to its large size of 6.1 GB, a direct download of Geometridae mundi via Internet Explorer, Google Chrome etc. is unfortunately not possible since these web browsers only allow for a size- and time-limited download. Therefore the download must be conducted with an FTP client like FileZilla ([http://www.chip.de/downloads/FileZilla\\_13011076.html](http://www.chip.de/downloads/FileZilla_13011076.html)).*

Server: 193.196.48.211

Benutzername/User name: Geometridae

Passwort/password: Mundi.2017

Port: 3601

The screenshot shows the FileZilla FTP client interface. At the top, there is a menu bar with options: Datei, Bearbeiten, Ansicht, Übertragung, Server, Lesezeichen, Hilfe. Below the menu is a toolbar with various icons. The main area is divided into several sections:

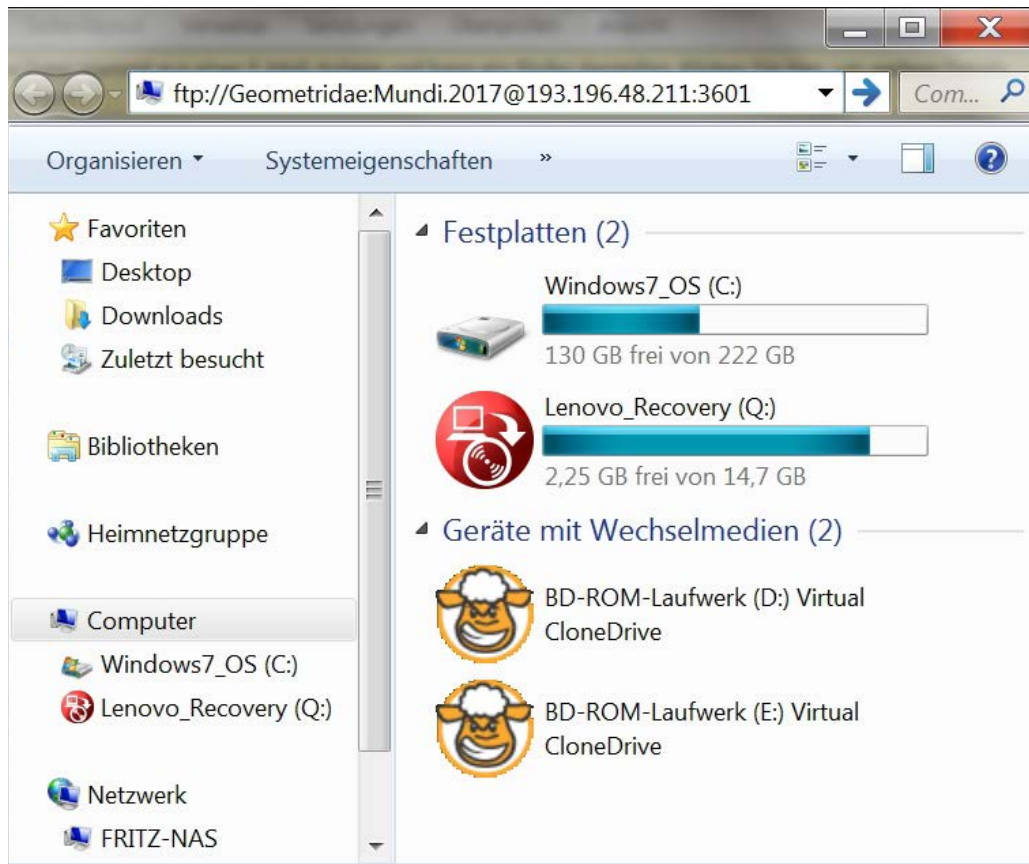
- Connection Fields:** Server: 193.196.48.211, Benutzername: ieometridae, Passwort: [masked], Port: 3601. A 'Verbinden' button is visible.
- Status Bar:**
  - Status: Berechne Zeitzoneabweichung des Servers...
  - Status: Timezone offset of server is 0 seconds.
  - Status: Anzeigen des Verzeichnisinhalts für "/Geometridae mundi ges" abgeschlossen
- Local File System:** Shows the local drive C:\Users\All Users\Documents\ with a tree view of folders like Brother, Desktop, Documents, Dolby, Favorites, and FLEXnet.
- Remote File System:** Shows the server path /Geometridae mundi ges containing a folder named Geometridae mundi ges.
- File Lists:**
  - Local File List:** Shows a single entry '..'.
  - Remote File List:**

Dateiname	Datei...	Dateityp	Zuletzt g...	Berech...	B
..					
Geometridae mundi I		Dateio...	06.06.20...	drwx--...	u
Geometridae mundi III		Dateio...	06.06.20...	drwx--...	u
Geometridae mundi Tei...		Dateio...	06.06.20...	drwx--...	u
_Download_Geometrid...	253.0...	Adobe...	07.06.20...	-rwx---	u
_installation instructions...	138.8...	Adobe...	06.06.20...	-rwx---	u
start.10.jpg	3.437	IrfanVi...	15.03.2017	-rwx---	u
start.11.jpg	432.7...	IrfanVi...	16.03.20...	-rwx---	u
start.9.jpg	2.154	IrfanVi...	15.03.2017	-rwx---	u
start.html	5.625	Firefox...	05.05.20...	-rwx---	u
- Summary:**
  - Local: 7 Dateien und 26 Verzeichnisse. Gesamtgröße: 3.211.284 Bytes
  - Remote: 6 Dateien und 3 Verzeichnisse. Gesamtgröße: 835.779 Bytes
- Bottom Panel:**
  - Buttons: Zu übertragende Dateien, Fehlgeschlagene Übertragungen, Erfolgreiche Übertragungen
  - Status: Warteschlange: leer

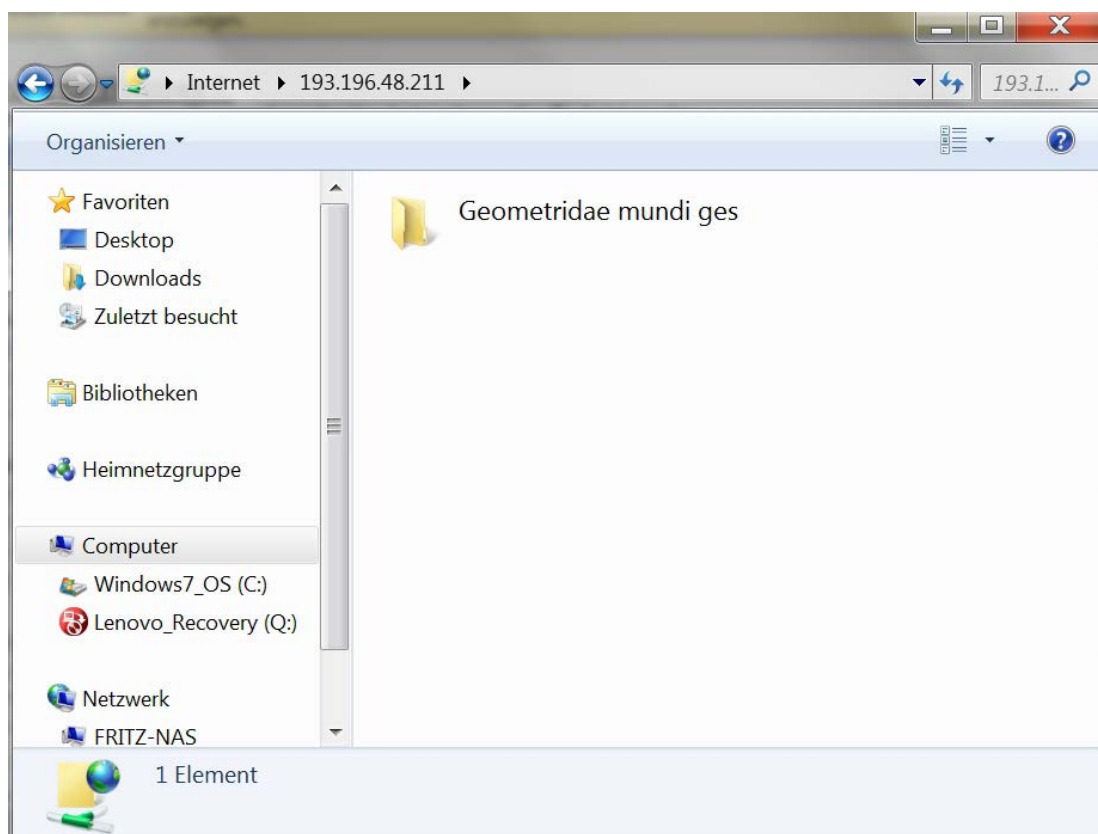
### Erklärung für Windows 7 – *Instruction for Windows 7*

Am besten über den Computerarbeitsplatz oben die Befehlszeile `ftp://Geometridae:Mundi.2017@193.196.48.211:3601` einfügen und mit Enter bestätigen.

*Open the Desktop and insert `ftp://Geometridae:Mundi.2017@193.196.48.211:3601` in the command line. and confirm with Enter.*

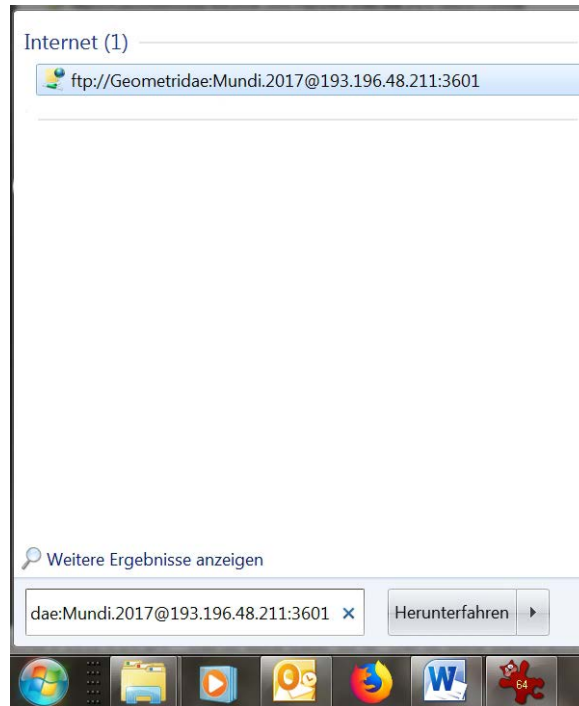


Dann öffnet sich dieses Fenster, jetzt den Ordner „Geometridae mundi ges“ z.Bsp. auf dem Desktop ziehen.  
*The following window will open. Now drag the folder “Geometridae mundi ges” e.g. to your desktop.*





Es geht auch über den Ausführen-Befehl im Startmenü: den FTP-Link mit Doppelklick bestätigen.  
*It will also work via an execute command in the start menu. Confirm the FTP link with a double click.*



### **Anleitung für Windows 10 – Instruction for Windows 10**

„Ausführen“ wie folgt nachrüsten(!): Ausführen-Befehl unter Windows 10 im Startmenü nachrüsten. Öffnen Sie das Startmenü und geben Sie unten in die Suche "Ausführen" ein. Alternativ starten Sie das Tool Über die Tastenkombination [Windows] + [R]. Klicken Sie anschließend mit der rechten Maustaste auf das Suchergebnis und wählen Sie die Option "An Startmenü anheften". Ziehen Sie die Kachel anschließend in die untere linke Ecke, um das Startmenü den früheren Windows-Versionen anzupassen.

*First, add the execute command to the start menu. Open the start menu and type "execute" in the search bar. Alternatively start the tool with the key combination [Windows]+R. Right-click on the search match and select the option "pin to start menu". Drag the tile to the lower left corner to adjust the start menu to previous windows versions.*

# August Kuwert and his Lepidoptera works

J. B. Heppner, McGuire Center for Lepidoptera and Biodiversity, Florida Museum of Natural History, University of Florida, Gainesville, Florida, USA; [jheppner@flmnh.ufl.edu](mailto:jheppner@flmnh.ufl.edu)

With this English translation of his obituary from 1894 in the German journal *Insekten-Börse*, the Lepidoptera studies of Kuwert can be highlighted. Kuwert is known for his work on beetles, but he wrote papers on Lepidoptera as well. His contributions to lepidopterology have long been forgotten, so for the English reader this translation can allow Kuwert to also be known for his work on European Lepidoptera, particularly for his studies of lepidopteran metamorphosis. Kuwert's most significant paper on Lepidoptera is his work on metamorphosis from 1879 (see references).

The translation is made into readable English, but as close to the form of the German as feasible. Older names for localities have not been revised to modern names, thus some of the towns formerly in Germany are now in Poland, Russia (Kaliningrad), Lithuania, and Latvia.

The references section includes Kuwert's papers on Lepidoptera, as well as the reference for the 1894 obituary. Authorship for the obituary was not given in the original. The portrait (Fig. 1) is from the 1894 obituary.

## August Ferdinand Kuwert

The notice of the demise of the entomologist Kuwert will arouse the most regret in all circles of insect enthusiasts, notably the coleopterists, not only due to his far reaching and well maintained activities, but also because he was in his last years among the most productive workers and still in the middle of studies.

Born in the year 1828 on the 15<sup>th</sup> of October, in Nidden, in East Prussia close to Latvia, where his father was postman, Kuwert spent his earliest years on the farm of his parents, in Mehlawischken, after the post road was altered to there, and until his 9<sup>th</sup> year when he entered the gymnasium in Tilsit. The love of nature studies was already

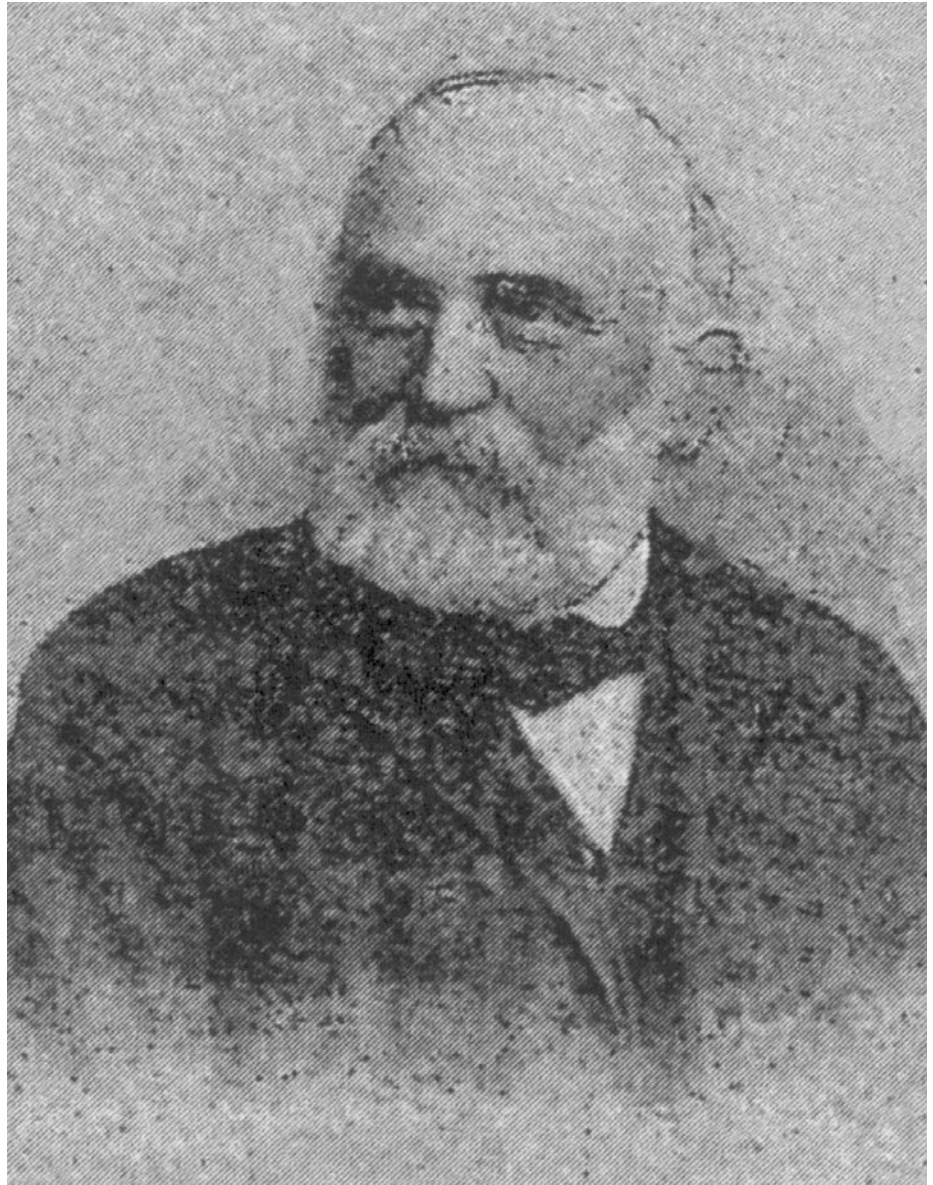


Figure 1. August Ferdinand Kuwert (1828–1894)

great in the boy, and he amassed collections of beetles, butterflies, and stuffed birds, so much so that his school mates and teachers gave him the nickname 'Cuvier'. After his start to university in 1845, he gave his collections, which contained examples of all orders, to the then Agricultural Academy of Waldau.

Later, when he himself entered into agriculture as an estate owner in Wernsdorf (by Tharau in East Prussia), the question came to him if he wanted to join the Prussian expedition to Japan as agricultural and natural history member. This

commission, however, he thought he had to decline, since he did not want his estate to be left without management. Likewise, the ship 'Amazone', which he likely would have been boarded with, was lost in East Indian waters.

A row of years followed without any activity in nature studies, until the year 1866, when his interest in ornithological collecting began again, and his name was to be found among the founding members of the ornithological society in Berlin. The extensive ornithological material, but for the rural man not too extensive, as also various



agricultural insect pests, led again to his lepidopterological interest, and then to the coleopterological.

The first publication, in the *Katterschen Entologischen Nachrichten*, was noticed by specialists due to his almost year-long microscopic study, leading the author immediately into short correspondence with men, like Leukert and Zaddach, who then supported him with literature on his studies as well as with the view that the tracheae in the last metamorphic stage of insects would not transfer from the pupa to the adult: the experimental results verifying this fact still remain in the Kuwert Collection with material of *Riparia melanaria* as vouchers. The interest in the metamorphosis of the Lepidoptera led to an extensive lepidopterological collection, and after suggestions from England, to his study of droppings-attracted collections, which led to the study of noctuids; this led to various papers in the *Stettiner Entomologische Zeitung* and further to an extensive trading circle throughout Europe.

A long list of previously unknown noctuids from East Prussia was made known, followed by correspondence with Zeller and Speyer, as well as with entomologists in North America. Through Siebold in Munich, it was possible to obtain material of *Abia fasciata*, and with the larvae to determine the parthenogenesis of this species. Likewise, extensive correspondence was begun with the Königsberger entomologists, Sauter, Lentz, Czwalina, and Steiner.

As the fauna of East Prussian Lepidoptera became more well known, his interest in the Coleoptera won out, especially after Dr. v. Seidlitz, from Latvia, moved to Königsberg and then formed a small circle of insect enthusiasts for the province. Already beforehand, the collection was enhanced from Redtenbacher and his close rela-

tionship with Major v. Hofmann of Vienna (4,000 correctly determined European beetle species), forming the foundation of a solid scientifically arranged collection, and which went to another meaningful dimension with the addition of exotic faunas, so that eight cabinets were needed to house all.

At that time, much correspondence was had with Dr. C. A. Dohrn and Dr. L. W. Schaufuss, among others. A farmer in Missouri sent a great amount of the fauna of that region. Schmidt, in Flottbeck, transferred complete series of worldwide examples from his collectors of curculionids and tenebionids from his collection, and a large collection of display examples from tropical regions.

Ever larger became his letter correspondence (in Russia with Christoph and Becker; in Austria with Viertl, Reitter, and others; in France with Bellier, Fauvel, Régimbart; and with Berg in Buenos Aires, etc.), until finally the correspondence had to be reduced due to its size, so Kuwert could concentrate to his scientific work on monographic keys, which Reitter had encouraged him to do. Here, always there were the coleopterological orphans which were most important in his work: first, the Palpicornier of Europe (published 1889–1890), which the author worked hard on for three years, then the small families of the heterocerids and parnids of Europe (published 1890 and 1891), which work was the result of a year's work. In these three families, a number of new species were brought to light, as the keys verify. Undoubtedly, the author's work was supported by the collections and literature of v. Heyden, as also Dr. v. Seidlitz of Frankfurt and the Brussels State Museum.

In the late autumn of 1889, Kuwert started on an identification key to various species of passalids

of the world. Most of the museums and larger collections in Europe made their material available, thus increasing the previously known species number of the passalids threefold to 200 species: as prelude to this work, there appeared an overview in 1891 in the *Deutsche Entomologische Zeitschrift*. The entire construction formed by Kaup, had to be discarded in this work [of Kuwert], and a number of new genera and new foundations for their classification had to be erected. With this work, Kuwert's greatest, his name is secured. After the completion of this work, he began immediately to work on a monograph of the clerids, which remains unpublished, but is fairly well advanced in manuscript and, thus, not lost to science.

The greatest worth of the remains of Kuwert's collections is the result of his works, where the majority of his named species are present in numbers.

Entomology can retain the good of the resultant formation, that one man who was in the center of efforts and concerns of a practical life, and burdened by many common inherited and political concerns from the compatriots of his time, yet took every free minute to work on its advancement.

*Have pia anima!*

#### References

- Anon. 1894. August Ferdinand Kuwert. *Insekten-Börse* (Stuttgart), 11(20):191–192.
- Kuwert, A. F., 1871. Einiges über den Noctuinen-Köderfang und die Flugzeit der in Ostpreussen durch denselben beobachteten Falter aus dem Sommer 1870. *Stett. Ent. Ztg.* (Stettin), 32: 212–219.
- Kuwert, A. F., 1878. Vernichtung der Gamma-Eule. *Dtsch. Landwirtsch. Pr.*, 5:450–451.
- Kuwert, A. F., 1879. Wahrnehmungen über Insektenentwicklung. *Ent. Nachr.* (Berlin), 5:45–48, 61–65, 73–80, 1 pl.



# The European Peacock, *Aglais io* (Linnaeus, 1758), in North America (Lepidoptera: Nymphalidae)

Vazrick Nazari<sup>1</sup>, Louis Handfield<sup>2</sup> and Daniel Handfield<sup>3</sup>

<sup>1</sup>Canadian National Collection of Insects, Arachnids and Nematodes, Ottawa Research and Development Centre, Agriculture and Agri-Food Canada, Ottawa, Ontario, Canada; vazrick.nazari@agr.gc.ca

<sup>2</sup>Mont-Saint-Hilaire, Québec, Canada

<sup>3</sup>Saint-Mathieu-de-Beloil, Québec, Canada

Reports of sightings of the widespread Palearctic butterfly *Aglais io* in North America date back to 1985, when it was first seen in Lane County, Oregon (Hanchliff 1994). But the first North American specimen was collected on the East coast, in Charron Island, Quebec, on 13th of May 1997 by Jacques Leclerc, an amateur collector from Montreal (Handfield 1999). The introduction likely occurred through the Port of Montreal, which is not far from this locality. The butterfly is now well established in the greater Montreal area, and since 1997 it has been seen or collected numerous times. *Urtica procera* has been suggested as its possible host in Quebec (Handfield 2011). A sighting in Staten Island, New York in September 1995 (Goch-

feld & Burger 1997) suggests additional introductions or (less likely) a range expansion. Presence of this butterfly on the West coast of North America has also been recently confirmed by another sighting in Richmond, British Columbia, in October 2017 (Alan Russell, pers. comm.)(Fig. 1).

Recently three specimens collected in Quebec were subjected to DNA barcoding and found to belonged to a common haplotype widespread in Europe extending into Palearctic to Russia and South Korea. It is thus not possible to determine the origin of the Quebec population from DNA barcodes, although Japan (ssp. *geisha*) can be ruled out. It is likely that the source of the West coast populations would be different from those

in the East coast, but no voucher specimens yet exist. A more complete report will be published in the next issue of the News of the Lepidopterists' Society.

## References

Gochfeld, M. & Burger J., 1997. Butterflies of New Jersey. Rutgers University Press, New Brunswick, New Jersey, 352 p.

Handfield, L. 1999. Les Papillons du Québec. 1<sup>st</sup> edition. Broquet, Saint-Constant, Québec. 982 p., 123 plates.

Handfield, L. 2011. Les Papillons du Québec. Broquet, Saint-Constant, Québec. 672 p., 166 plates.

Hinchliff, J. 1994. An Atlas of Washington Butterflies – The Distribution of the Butterflies of Washington. Oregon State University, Corvallis, Oregon, v + 136 p. ■

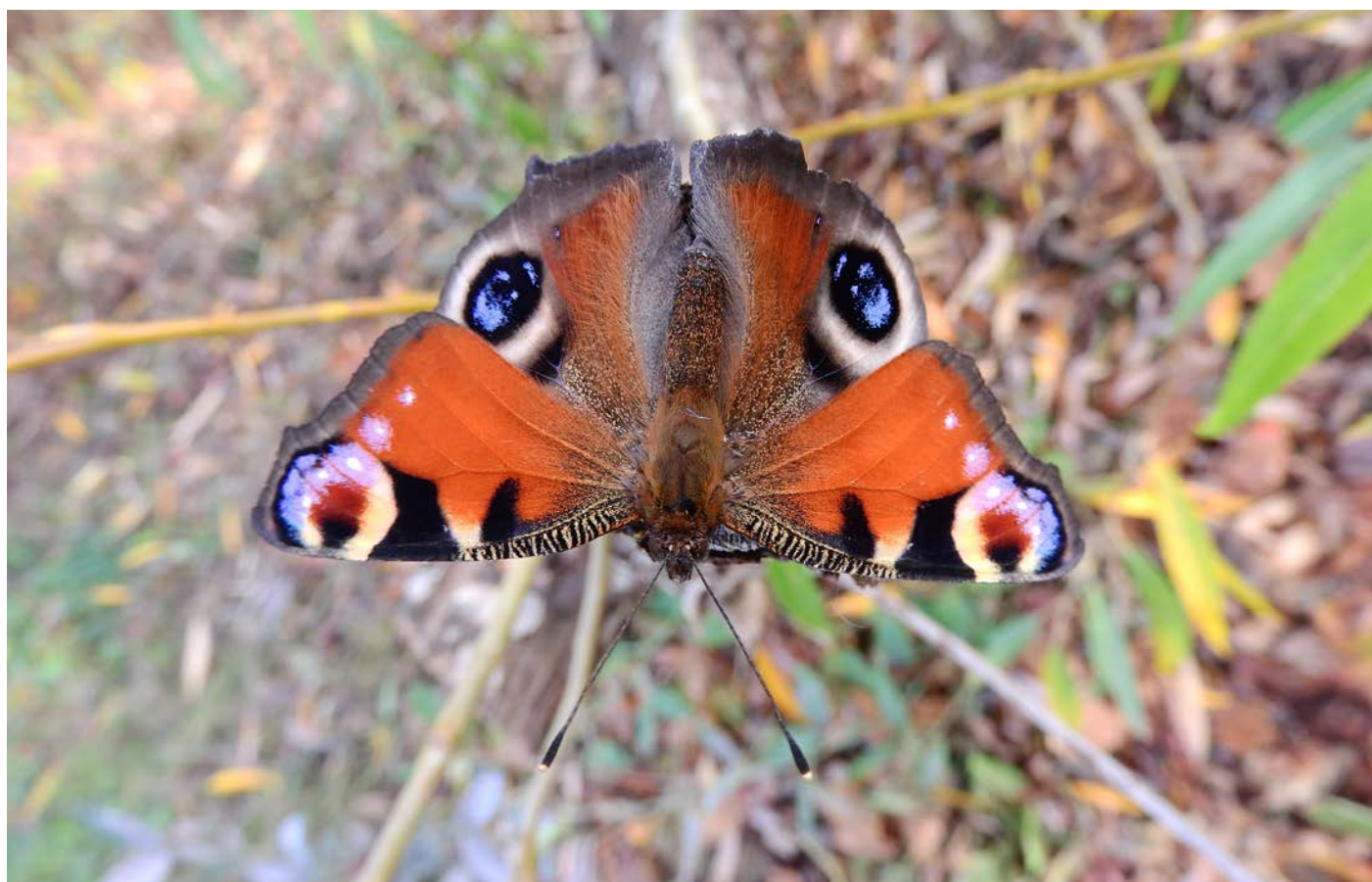


Figure 1. *Aglais io* in Richmond, BC, Canada. Photo by Alan Russell (reproduced with permission to VN)



# New Books

## New Publications

Guide to the butterflies of the Palearctic region: Satyrinae part V – Tribe Satyrini – Genera *Satyrus*, *Minois*, *Hipparchia* by V. Sbordoni, D. Cesaroni, J. Coutsis & G. C. Bozano (Ed.), Omnes Artes, Milano (Italy), May 2018, 134 pp, ISBN 978-88-87989-22-9, 32 EUR

SATYRINAE part V

Tribe SATYRINI  
Genera *Satyrus*  
*Minois*  
*Hipparchia*

Authors: V Sbordoni  
D Cesaroni  
JG Coutsis  
GC Bozano

## GUIDE TO THE BUTTERFLIES OF THE PALEARCTIC REGION

Editor: GC Bozano



**SATYRUS PARTHICA Lederer, 1869**

*Satyrus Bryce* Var. *Parthica* Lederer, 1869, Horae Soc. ent. ross. 6: 83  
Type locality: "... von Amasia und vom Bosdagh ..." [Turkey]

**DIAGNOSTIC CHARACTERS**  
male upf with androconial patch;  
upf postdiscal ocellus in space 2 absent or vestigial;  
unf discal area dark red-brown in males, dull yellow-orange in females;  
unh veins lined with white;  
male genitalia as in *S. tronica dabi*, but aedeagus in lateral aspect evenly widening distally and uncus shorter and in lateral aspect straighter

**VARIATION**  
size: variable, populations from NE Iran constantly very small (P. Zehzade pers. comm.);  
unh marbling variable;  
unf often with a dark submarginal line from costa to inner margin



♂ ups  
ssp. *parthica*  
Turkey, Van Prov., Otzoldere



♂ ups  
ssp. *parthica*  
Turkey, Van Prov., Otzoldere



♂ ups  
ssp. *parthica*  
Turkey, Agri, Mt. Ararat



♂ ups  
ssp. *parthica*  
Iran, Taoh, Mt. Shabvar



♂ ups  
ssp. *parthica*  
Iran, Taoh, Mt. Shabvar

**HIPPARCHIA (PARAHIPPARCHIA) PELLUCIDA (Stauder, 1924)**

*Satyrus semele* ssp. n. *pellucida* m. Stauder, 1924, Mitt. münchn. ent. Ges. 14: 64  
Type locality: "Orte Terter in Transkaukasien" [Azerbaijan, Tartar River]  
= *Satyrus semele cotys* Jachontov, 1935, Nashi dnevnnye babochki [Our Butterflies]: 139 [JSS]  
Type locality: Crimea  
= *Hipparchia pellucida hesselbarthi* n.subsp. Kudrna, 1976, Atalanta 7: 169 [JSS]  
TL.: "♂ Turkey: Prov. Volu: vic. Abant, 1500-1700 m" [NW Turkey, Bolu Prov.]

**DIAGNOSTIC CHARACTERS**  
ups orange markings little developed;  
male upf androconial spot very large and little broken by veins;  
male unh postdiscal white band prominent;  
male genitalia: uncus about as long as in *H. semele*, but heavier, dorsum in lateral aspect with post-medial concavity and ventrum with strong sub-terminal convexity, both accounting for the seemingly raised-up position of the component's distal end; falces wider than in *H. mersina* and usually more strongly curved-upwards; valva in lateral aspect wider at base and mid-section than in all other previously treated *semele* species-group taxa, length equal to the combined length of uncus plus tegumen, sub-terminal dorsal triangular extension absent, but substituted by single, often double, very short triangular swelling, neck immediately basad of these swellings very wide; aedeagus as for subgenus and having same length as in *H. semele*;  
female genitalia: same as in *H. volgensis*



♂ ups  
ssp. *pellucida*  
Armenia, Alladara



♂ ups  
ssp. *pellucida*  
Ukraine, Crimea, Sudak



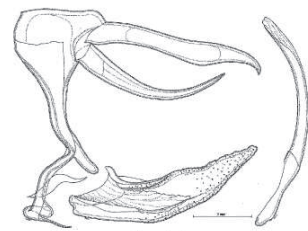
♂ ups  
ssp. *pellucida*  
Ukraine, Crimea, Sudak



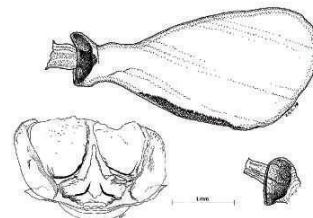
♂ ups  
ssp. *pellucida*  
Turkey, C Anadolía, Yozgat, Çamlık Milli Park



♂ ups  
ssp. *pellucida*  
Turkey, C Anadolía, Yozgat, Çamlık Milli Park



♂ genitalia  
ssp. *pellucida*  
Crimea, Sudak



♀ genitalia  
ssp. *pellucida*  
Iran, Kurdistan, Sarsang

TOP: corpus bursae minus sterigma in lateral aspect  
BOTTOM LEFT: sterigma in dorsal aspect  
BOTTOM RIGHT: ductus bursae

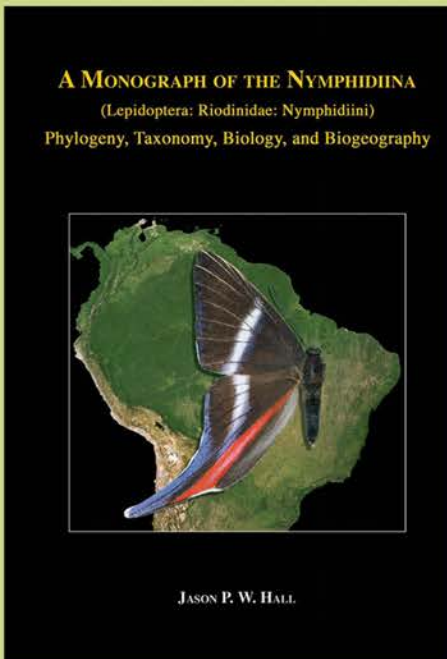


# NEW BOOK ANNOUNCEMENT

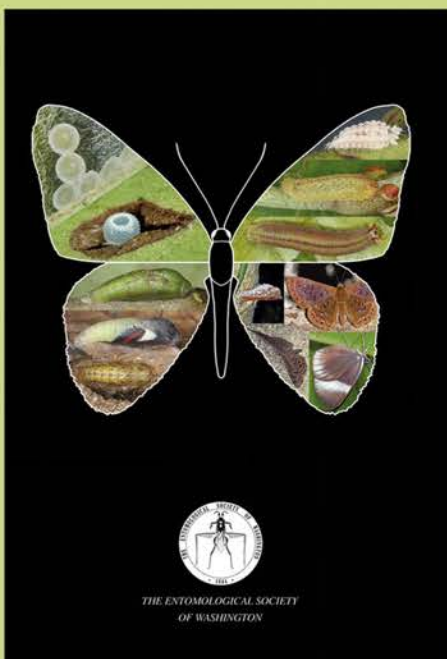
## A Monograph of the Nymphidiina (Lepidoptera: Riodinidae: Nymphidiini): Phylogeny, Taxonomy, Biology, and Biogeography

by Jason P. W. Hall

2018, hard cover, 7 x 10.25 in, 990 pp. (ISBN 978-0-692-98754-4). Published by and available from  
The Entomological Society of Washington (entsocwash.org), \$125 + postage.



- Comprehensive phylogenetic revisions of the 26 genera (159 species) recognized in the riodinid subtribe Nymphidiina (including the genera *Catocyclotis*, *Nymphidium*, *Livendula*, *Periplacis*, *Zelotaea*, *Adelotypa*, *Calospila*, and *Setabis*)
- Descriptions of 8 new genera, 11 new species, and 4 new subspecies
- Sixteen separate phylogenetic analyses using a total of 568 characters of adult morphology and biology
- Extensive new geographic and biological data resulting from museum research examining nearly 27,000 specimens in 42 museums and private collections worldwide, and fieldwork that included spending 20 months in Ecuador over a period of 26 years
- Introductory chapters on the history of classification and diagnosis of the tribe and its subtribes, biology (including habitats and patterns of elevational species richness, phenology, rarity, mate location and courtship, mimicry, nutritional ecology, and food plants and immature stages), biogeography (including patterns of regional and community species richness, and patterns of speciation), and conservation (regional analyses and status of threatened taxa)
- Thirty-nine color plates, including 33 plates of adults for identification, 3 plates of adults in nature, and 3 plates of mimetic adults
- A total of 1121 numbered or lettered figures, including 38 cladograms, 65 figures of immature-stage morphology and ecology, 302 male and female genitalia figures, and 73 distribution maps, as well as 66 numbered or component tables



THE ENTOMOLOGICAL SOCIETY  
OF WASHINGTON

# A MONOGRAPH OF THE NYMPHIDIINA

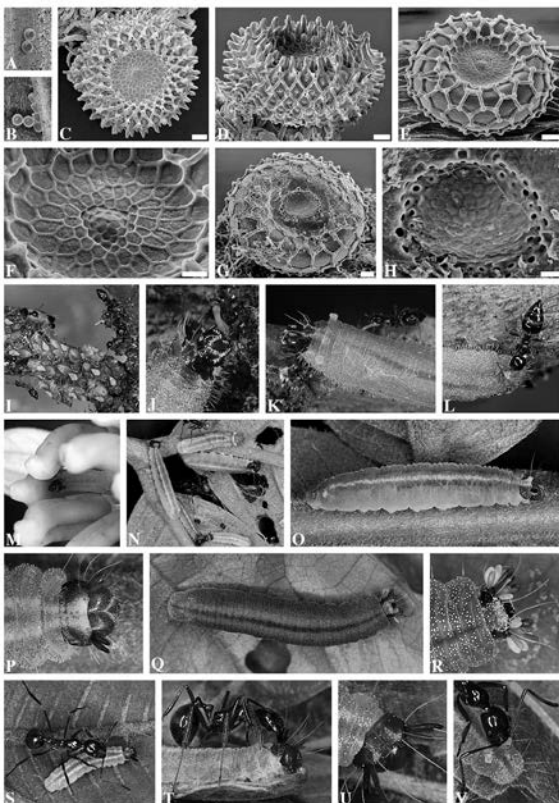
(Lepidoptera: Riodinidae: Nymphidiini)  
Phylogeny, Taxonomy, Biology, and Biogeography



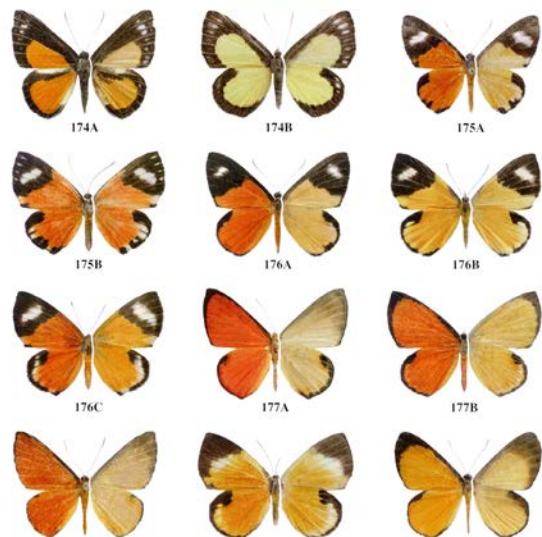
JASON P. W. HALL



Fig. 196. A. *Parvosipila lucianus* ♀, Tambopata Research Center, Río Tambopata, S.E. Peru [RC]. B. *Periplyta hebrus* ♂, Pimpíllala, nr. Tena, E. Ecuador [KRW]. C. *Pseudolivendula hermitica* ♂, Finca San Carlo, nr. Tena, E. Ecuador [DHA]. D. *Pseudolivendula byzeres* ♂, Finca San Carlo, nr. Tena, E. Ecuador [DHA]. E. *Pandemos pasiphae* ♂, Cristalino Jungle Lodge, nr. Alta Floresta, S.W. Brazil [MT] [GC]. F. *Adelotpa horsippa* ♂, mouth of Río Afangu, Río Napo, E. Ecuador [KRW]. G. *Argyraspila tavakiliani* ♂, Finca San Carlo, nr. Tena, E. Ecuador [DHA]. H. *Hypophylla sudias* ♂, C. Catemaco, E. Mexico [DW]. I. *Hypophylla sudias* ♀, Mexico [JG]. J. *Calospila parthaon parthaon* ♂, Amazonia Lodge, nr. Shintuya, S.E. Peru [KG]. K. *Setabis myrtis* ♂, Caisuaná, E. Brazil [Pa] [AJ]. L. *Setabis pythioides* ♀, Orchids Paradise Hotel, nr. Tena, E. Ecuador [KG]. M. *Setabis lagus lagus* ♂, Cristalino Jungle Lodge, nr. Alta Floresta, S.W. Brazil [MT] [RH]. N. *Setabis epitus* ♀, Rio Parauri, W. Brazil [Am] [GC]. O. *Setabis sericea sericea* ♀, Cristalino Jungle Lodge, nr. Alta Floresta, S.W. Brazil [MT] [GC]. Photo credits: AJ = Amy Johnson; DHA = David Ahrenholz; DW = Dan Wade; GC = Gill Carter; JG = Jeffrey Glassberg; KG = Kim Garwood; KRW = Keith Willmott; RC = Rick Cech; RH = Richard Hoyer.



SANGUINEA



174A. *Sanguinea clemenes* (Hewitson, 1870) ♂, Rincón de Osa, Costa Rica [USNM]  
174B. *S. clemenes* ♀, Gatún, Panamá [USNM]  
175A. *Sanguinea heliodora* (Staudinger, 1887) ♂, Pebas, Peru [BMNH]  
175B. *S. heliodora* ♀, Explornapo-ACFER, Peru [USNM]  
176A. *Sanguinea luceres* (Hewitson, 1870) ♂, Tiguino, E. Ecuador [JHKW]  
176B. *S. luceres* ♀, Montalita, E. Colombia [USNM]  
176C. *S. luceres* ♀, Manaus, C. Brazil [Am] [MNHN]  
177A. *Sanguinea cruentata cruentata* (Butler, 1867) ♂, Uspiranga, C. Brazil [Am] [MNHN]  
177B. *S. c. cruentata* ♀, Uspiranga, C. Brazil [Am] [MNHN]  
177C. *Sanguinea cruentata cumulata* Hall n. ssp. **PT** ♂, Pakitza, P. N. Manu, Peru [USNM]  
177D. *S. c. cumulata* **PT** ♀, Balsapuerto, Peru [MNHN]  
177E. *Sanguinea cruentata helice* (Godman, 1903) ♂ orange form, Maués, C. Brazil [Am] [MNHN]



## **NEW PUBLICATION!**

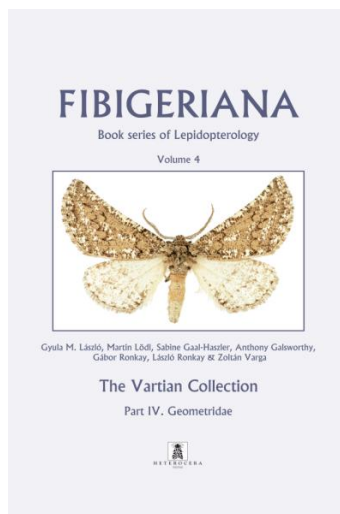
### **FIBIGERIANA Volume 4 - GEOMETRIDAE**

*The fourth volume of the series introducing the Vartian Collection housed in the Natural History Museum, Vienna*

The **FIBIGERIANA** book series of Heterocera Press has been launched with the aim to publish the taxonomically revised historical Lepidoptera collections preserved in museums.

The first, second and third volumes of **FIBIGERIANA** (published in 2012, 2013 and 2015, respectively) provided a comprehensive demonstration of the impressively species-rich Noctuoidea, Lasiocampoidea, Bombycoidea, Drepanoidea, Cossioidea, Zygaenoidea, Hepialoidea and the Rhopalocera material of the Vartian Collection.

The newly published fourth and at the same time the last item of the series provides an exhaustive summary of the extraordinary **Geometridae material of the Vartian collection**.



This remarkable part of the collection represents probably the most representative and taxon-rich Geometridae collection of **North Africa, Europe, the Middle East, Southern Central Asia** and the **Western Himalayas**. The book comprises the complete checklist of the Geometridae taxa preserved in the collection, with reference to the numbers and countries of origin of the specimens at each taxon; the specimens are illustrated in **87 colour plates** introducing not fewer than **1353 species-group taxa** collected in altogether **52 countries**. Besides the exhaustive collection checklist, the book contains a **complete list of the Geometridae type material** of the Vartian Collection as well as **description of seven new species** along with the associated black and white genitalia figures.

**The fourth volume** of the **FIBIGERIANA** book series is meant to be serving as a suppletory identification guide to the **Geometridae** fauna of the **Western Palaearctic** zoogeographical region. The book is warmly recommended to all amateur and professional Geometridae enthusiasts.

**Price of the book: 94,50 EUR incl. VAT (5%), (+ postal and packaging cost). Could you please indicate your contact phone number when placing an order, so the delivery shall be hassle-free.**

**Subscription discount: -10% (also valid for subscribers of The Witt Catalogue series).**

**Special discount for ordering the complete set of Fibigeriana (Vols 1-4): 25%**

For ordering the new volume please contact us by e-mail: [info@heterocera.hu](mailto:info@heterocera.hu) or visit our website [www.heterocera.net](http://www.heterocera.net). The book is available at the main entomological book sellers, too.

**HETEROCERA PRESS**  
Natural History Book Publisher and Researcher Ltd.



**HETEROCERA**  
PRESS

## Membership 2018 – Mitgliedschaft 2018 – Cotisation 2018



Please remember that the subscription becomes due at the beginning of the year. The subscription for the year 2018 is 50 € for individuals and 65 € for associations. Please pay your 2018 subscription promptly either directly to the SEL account (preferred) or to the local treasurer in your country (see list below).

Nous vous rappelons que la cotisation annuelle est due dès le début de l'année en cours. Le montant de la cotisation 2018 est de 50€ pour les membres ordinaires et de 65€ pour les associations ou institutions. Si vous ne l'avez déjà fait, nous vous remercions de vous en acquitter rapidement par virement international au compte de la SEL (préférée) ou auprès du trésorier local de votre pays dont la liste est fournie ci-dessous.

Bitte beachten Sie, dass Ihr Mitgliedsbeitrag zu Beginn eines jeden Jahres fällig wird. Der Beitrag für 2018 beträgt für Einfache Mitglieder 50€ und für Institutionelle Mitglieder 65€. Bitte zahlen Sie Ihren Beitrag für 2018 pünktlich auf das SEL-Bankkonto (bevorzugt) oder an ihren lokalen SEL-Schatzmeister vor Ort (siehe Liste unten).

SEL Societas Europaea e.V. IBAN: DE63 3701 0050 0195 6505 07 Postbank Köln (BIC: PBNKDEFF)

### PayPal /Local SEL treasurers

Members living in outside Europe, or having difficulties in paying their membership fee via SEPA bank transfer may use PayPal or contact the local SEL treasurer. They should check, however, that the full amount of the membership fee is paid on the PayPal account and that all expenses, if any, are paid by the payee. Please contact: Wolfgang Eckweiler (SEL-members@eckweiler.com).

### Local SEL treasurers – Les trésoriers nationaux de la SEL – Die lokalen SEL-Schatzmeister

#### Austria

**Dr. Peter Huemer**

Tiroler Landesmuseum (Naturwissenschaften), Feldstrasse 11a, A-6020 Innsbruck, p.huemer@tiroler-landesmuseen.at, Tel. 512/587286; Beitrag bitte direkt auf das SEL-Konto (s.o.) überweisen

#### Belgium/Luxembourg

**Willy De Prins**

Dorpstraat 401B, B-3061 Leefdaal, willy.deprins@gmail.com. Please pay directly to the SEL account

#### Denmark

**Peder Skou**

Aamosen 1, Ollerup, DK-5762 Vester Skerninge, apollobooks@vip.cybercity.dk, Tel. 62-263737, Giro account 6580602. The ordinary dues are DKK 375,-; clearly state "SEL-2018"

#### France

**Prof. Michel Savourey**

481 Av. S. Pasquier, F-73300 St. Jean-de-Maurienne; CCP 301745S Grenoble ou par Eurochèque libellé au nom de M. Savourey

#### Hungary

**Dr. László Ronkay**

Magyar Természettudományi Múzeum Állatára, Baross u. 13, H-1088 Budapest, ronkay@zoo.zoo.nhmus.hu

#### Italy

**Carlo Matessi**

Via Cascina Margarina 6, I-27048 Sommo (PV), matessi.carlo@gmail.com, Tel. 0382 914002, mobile. 333 9904726, Bank account no. 18465 at BNL, Pavia, IBAN: IT55 R 01005 11300 000 000 018465, BIC: BNLITRR, reason of payment (causale): "SEL 2018"

#### Netherlands

**Hans Coene**

Emmakade 16, 1182 AM Amstelveen, ha.coene@gmail.com, Tel. +31204418347. Please pay directly to the SEL account

#### Poland

**Prof. Dr. Jarosław Buszko**

Uniwersytet Mikolaja Kopernika (Inst. Biologii), ul. Gagarina 9, PL-87-100 Torun, buszko@biol.uni.torun.pl, Tel. +48-5662-11469

#### Spain

**Dr. Elisenda Olivella Pedregal**

Tarragona 106, 1-1, E.08015 Barcelona, eolivell@xtec.cat Banco de Sabadell 0081 Bank account: 00810397380006081518, IBAN: ES73 -0081 0397 3800 0608 1518

#### Sweden

**Dr. Nils Ryrholm**

Flogstavägen 158, S-75272 Uppsala, nrm@hig.se, Tel. +46-18460666, Fax +46-26648758

#### Switzerland

**Rudolf Bryner**

Bergluftweg 19 CH-2505 Biel, rbryner@bluewin.ch

#### United Kingdom

**Prof. Matthew Gandy**

Department of Geography, University College London, 26 Bedford, Way, London WC1H 0AP. m.gandy@ucl.ac.uk, Tel. 020 7679 5517. UK rates are £43 (members) and £56 (associations), Co-op Bank, sort code: 08-92-80, account: 12408690. From 2019 all UK subscriptions to SEL should be made directly to their German bank account and not via the UK representative anymore.

#### USA

**Eric Metzler**

P.O. Box 45, Alamogordo, New Mexico 88311-0045, U.S.A., metzler@msu.edu, Tel. 575-443-6250



SEL

Societas Europaea Lepidopterologica

Dr. Hossein Rajaei  
Staatliches Museum für Naturkunde  
Rosenstein 1  
D-70191 Stuttgart, Germany  
E-mail: hossein.rajaei@smns-bw.de

**Application for membership · Aufnahmeantrag · Bulletin de souscription**

**I hereby apply to become a member of SEL. I acknowledge the aims of SEL and agree to pay the annual dues.**

*Ich beantrage die Mitgliedschaft bei SEL. Ich werde die satzungsmäßigen Ziele des Vereins beachten und die jährlichen Mitgliedsbeiträge bezahlen.*

Par la présente je souhaite devenir membre de la SEL., j'ai pris connaissance du règlement et des objectifs de l'association auxquels je souscris et accepte de régler ma cotisation annuelle.

**Changes · Änderungen · Changements**

**Please change and complete the details above in the list of members of the Societas Europaea Lepidopterologica e. V., Karlsruhe.**

*Bitte ändern und ergänzen Sie die obigen Angaben in der Mitgliederdatei der Societas Europaea Lepidopterologica e. V.*

Veuillez modifier et compléter les informations ci-dessus dans la liste des membres du Societas Europaea Lepidopterologica e. V., Karlsruhe.

Surname · Name · Nom First Name/s, Title · Vorname, Titel · Prénoms, Titre Date of Birth · Geburtsdatum · Date de naissance

Address · Adresse · Address

E-mail · E-Mail · Email Phone Number · Telefonnummer · Numéro de téléphone Profession · Beruf · Profession

I collect, identify, study · Ich sammle, bestimme, bearbeite · Je collecte, détermine, étudie

**Consent to data processing · Einwilligung zur Datenverarbeitung · Consentement au traitement des données**

**I agree that my personal data are stored and processed within the framework of the legal data protection regulations. In doing so, we strictly adhere to the privacy policy of the Societas Europaea Lepidopterologica e. V. (For short version, see reverse side).**

*Ich stimme zu, dass meine personenbezogenen Daten im Rahmen der gesetzlichen Datenschutzbestimmungen gespeichert und verarbeitet werden. Dabei halten wir die strikt die Datenschutzrichtlinien der Societas Europaea Lepidopterologica e. V. ein (Kurzfassung siehe Rückseite).*

J'accepte que mes données personnelles soient stockées et traitées dans le cadre des dispositions légales de protection des données. Ce faisant, nous adhérons strictement à la politique de confidentialité de la Societas Europaea Lepidopterologica e. V. (Pour la version courte, voir le verso).

Date · Datum · Date Signature · Unterschrift · Signature

The membership fee is € 50 (€ 65 for cooperate members) per year. It should be transferred in January to avoid interruptions in receiving the NOTA. Members with a bank account in Germany should fill in and sign the SEPA form (see below). If you send money by bank transfer or Paypal, make sure that all bank fees are included in advance with the sum transferred. Der jährliche Mitgliedsbeitrag beträgt zur Zeit € 50 € (65 € für Institute) und ist jeweils im Januar fällig. Um Unterbrechungen beim Versand der NOTA zu vermeiden, empfehlen wir Mitgliedern mit Konto im Inland die Zahlung per SEPA-Lastschriftmandat (siehe unten). La cotisation est de 50 € (65 € pour les membres coopérants) par an. Il devrait être transféré en janvier pour éviter les interruptions de réception du NOTA. Les membres disposant d'un compte bancaire en Allemagne doivent remplir et signer le formulaire (voir ci-dessous). Si vous envoyez de l'argent par virement bancaire ou par Paypal, assurez-vous que tous les frais bancaires sont inclus à l'avance avec la somme transférée.

Societas Europaea Lepidopterologica e. V. • c/o Dr. Wolfgang Eckweiler • Gronauer Straße 40 • D-60385 Frankfurt  
Gläubiger-Identifikationsnummer: DE67SEL00001211069 • Mandatsreferenz: Mitgliedsnummer

**SEPA-Lastschriftmandat**

Ich ermächtige die Societas Europaea Lepidopterologica e. V. Zahlungen von meinem Konto mittels Lastschrift einzuziehen. Zugleich weise ich mein Kreditinstitut an, die von der Societas Europaea Lepidopterologica e. V. auf mein Konto gezogenen Lastschriften einzulösen.

Hinweis: Ich kann innerhalb von acht Wochen, beginnend mit dem Belastungsdatum, die Erstattung des belasteten Betrages verlangen. Es gelten dabei die mit meinem Kreditinstitut vereinbarten Bedingungen.

Kontoinhaber (Name, Vorname) Adresse (Straße, Hausnummer, Postleitzahl und Ort)

Kreditinstitut

BIC

DE IBAN (grau hinterlegt: IBAN-Format für Deutschland)

Ort, Datum

Unterschrift